



**DRAPER**<sup>®</sup>

PETROL

# MOWER

02580



These instructions accompanying the product are the original instructions. This document is part of the product, keep it for the life of the product passing it on to any subsequent holder of the product. Read all these instructions before assembling, operating or maintaining this product.

This manual has been compiled by Draper Tools describing the purpose for which the product has been designed, and contains all the necessary information to ensure its correct and safe use. By following all the general safety instructions contained in this manual, it will ensure both product and operator safety, together with longer life of the product itself.

All photographs and drawings in this manual are supplied by Draper Tools to help illustrate the operation of the product.

Whilst every effort has been made to ensure the accuracy of information contained in this manual, the Draper Tools policy of continuous improvement determines the right to make modifications without prior warning.

# 1. TITLE PAGE

---

## 1.1 INTRODUCTION:

**USER MANUAL FOR: 99cc 400mm Petrol Mower**

**Stock No's: 02580**

**Part No's: LMP400PD**

## 1.2 REVISIONS:

---

**Date first published March 2018.**

---

---

---

---

As our user manuals are continually updated, users should make sure that they use the very latest version.

**Downloads are available from:** <http://drapertools.com/manuals>

Draper Tools Limited

Hursley Road

Chandler's Ford

Eastleigh

Hampshire

SO53 1YF

UK

**Website:** [drapertools.com](http://drapertools.com)

**Product Helpline:** +44 (0) 23 8049 4344

**General Fax:** +44 (0) 23 8026 0784

## 1.3 UNDERSTANDING THIS MANUALS SAFETY CONTENT:

**WARNING!** – Information that draws attention to the risk of injury or death.

**CAUTION!** – Information that draws attention to the risk of damage to the product or surroundings.

## 1.4 COPYRIGHT © NOTICE:

Copyright © Draper Tools Limited.

Permission is granted to reproduce this publication for personal and educational use only. Commercial copying, redistribution, hiring or lending is prohibited.

No part of this publication may be stored in a retrieval system or transmitted in any other form or means without written permission from Draper Tools Limited.

In all cases this copyright notice must remain intact.

---

## 2. CONTENTS

---

<b>1. TITLE PAGE</b>	
1.1 INTRODUCTION.....	2
1.2 REVISION HISTORY .....	2
1.3 UNDERSTANDING THIS MANUAL .....	2
1.4 COPYRIGHT NOTICE .....	2
<b>2. CONTENTS</b>	
2.1 CONTENTS .....	3-4
<b>3. GUARANTEE</b>	
3.1 GUARANTEE .....	5
<b>4. INTRODUCTION</b>	
4.1 SCOPE.....	6
4.2 SPECIFICATION .....	6
4.3 HANDLING AND STORAGE.....	6
<b>5. HEALTH AND SAFETY INFORMATION</b>	
5.1 LAWN MOWER SAFETY WARNINGS	
-1) Training .....	7
-2) Preparation .....	7-8
-3) Operation .....	8-9
-4) Maintenance and storage.....	9
5.2 HEALTH AND SAFETY INFORMATION CONCERNING THE USE OF FUELS .....	10
<b>6. TECHNICAL DESCRIPTION</b>	
6.1 IDENTIFICATION .....	11
<b>7. UNPACKING AND CHECKING</b>	
7.1 PACKAGING .....	12
7.2 WHAT'S IN THE BOX? .....	12
<b>8. ASSEMBLING THE LAWN MOWER</b>	
8.1 FOLDING HANDLE.....	13
8.2 ADJUSTMENT STRUCTURE .....	13
8.3 MOUNTING AND DISMOUNTING THE GRASS BAG .....	14
8.4 STARTER HANDLE SUPPORT .....	14
8.5 HEIGHT OF CUT.....	14
<b>9. LAWN MOWER INSTRUCTION</b>	
9.1 BEFORE STARTING.....	15
9.2 START, RUN AND STOP POSITION .....	15
9.3 OPERATION PROCEDURES .....	16
9.4 TO STOP ENGINE .....	16
9.5 GRASS CATCHER.....	16
9.6 DECK .....	16
9.7 HEIGHT ADJUSTMENT INSTRUCTIONS.....	16

## 2. CONTENTS

---

<b>10. MAINTENANCE</b>	
10.1 SPARK PLUG.....	17
10.2 LUBRICATION INSTRUCTIONS .....	17
10.3 CLEANING .....	17
10.4 ENGINE AIR CLEANER.....	17
10.5 CLEAN AIR FILTER .....	17
10.6 CUTTING BLADE MAINTENANCE .....	18
10.7 CUTTING BLADE.....	18
10.8 BLADE MOUNTING TORQUE.....	19
10.9 FUEL AND LUBRICATION.....	19
10.10 STORAGE INSTRUCTIONS (OFF SEASON) .....	19
<b>11. TROUBLESHOOTING</b>	
11.1 TROUBLESHOOTING .....	20
<b>12. EXPLANATION OF SYMBOLS</b>	
12.1 EXPLANATION OF SYMBOLS .....	21
<b>13. DISPOSAL</b>	
13.1 DISPOSAL.....	22
<b>DECLARATION OF CONFORMITY</b> .....	ENCLOSED

## 3. GUARANTEE

---

### 3.1 GUARANTEE

Draper tools have been carefully tested and inspected before shipment and are guaranteed to be free from defective materials and workmanship.

Should the tool develop a fault, please return the complete tool to your nearest distributor or contact:

**Draper Tools Limited, Chandler's Ford, Eastleigh, Hampshire, SO53 1YF. England.**

**Telephone Sales Desk: (023) 8049 4333** or:

**Product Helpline (023) 8049 4344.**

A proof of purchase must be provided.

If upon inspection it is found that the fault occurring is due to defective materials or workmanship, repairs will be carried out free of charge. This guarantee period covering parts/labour is 12 months from the date of purchase except where tools are hired out when the guarantee period is 90 days from the date of purchase. The guarantee is extended to 24 months for parts only. This guarantee does not apply to normal wear and tear, nor does it cover any damage caused by misuse, careless or unsafe handling, alterations, accidents, or repairs attempted or made by any personnel other than the authorised Draper warranty repair agent.

Note: If the tool is found not to be within the terms of warranty, repairs and carriage charges will be quoted and made accordingly.

This guarantee applies in lieu of any other guarantee expressed or implied and variations of its terms are not authorised.

Your Draper guarantee is not effective unless you can produce upon request a dated receipt or invoice to verify your proof of purchase within the guarantee period.

Please note that this guarantee is an additional benefit and does not affect your statutory rights.

**Draper Tools Limited.**

## 4. INTRODUCTION

---

### 4.1 SCOPE

For the cutting of grass lawns. Suitable for medium/large garden lawns up to 500 – 600M<sup>2</sup>. Any other application is considered misuse.

### 4.2 SPECIFICATION

Stock No. ....	02580
Part No. ....	LMP400PD
Displacement .....	99cc
Engine Horse Power .....	2.4hp
Drive type .....	Hand push
Deck material .....	Plastic
Speed (no load) .....	3,000min <sup>-1</sup>
Cutting width .....	400mm
Cutting heights .....	5 (25-75mm)
Collection bag capacity .....	40L cloth bag
Fuel tank capacity .....	0.8L
Sound pressure level .....	84.6dB(A)
Sound power level.....	96.0dB(A)
Single value noise level† .....	96.0dB(A)
Weight (gross) .....	18kg

ALWAYS WEAR APPROVED EAR PROTECTION.

CAUTION: Do not touch rotating blade.

†A-weighted sound pressure level in accordance to 2000/14/EC.

### 4.3 HANDLING AND STORAGE

Care must still be taken when handling and lifting. Dropping this machine will have an effect on the accuracy and may also result in personal injury. This machine is not a toy and must be respected.

The environment will have a negative result on its operation if you are not careful. If the air is damp, components will rust. If the machine is unprotected from dust and debris; components will become clogged: And if not cleaned and maintained correctly or regularly the machine will not perform at its best.

# 5. HEALTH AND SAFETY INFORMATION

---

## 5.1 LAWN MOWER SAFETY WARNINGS

### LAWN MOWERS ADDITIONAL SAFETY

#### **Warning:**

Keep bystanders away.

The engine shall be stopped before carrying out adjustment, cleaning or maintenance.

Read user instructions before operating this machine.

The lawn mower shall not be operated without either the entire grass catcher or the guard in place.

**Caution:** Do not touch rotating blade.

Beware of blades. Blades continue to rotate after the motor is switched off. Use ear protection as appropriate.

Never operate the mower if you are tired, ill or under the influence of alcohol, drugs or medication that may impair your vision, judgement or coordination.

The blade control handle is a safety device. Never attempt to bypass its operation. Doing so makes the safety device inoperative and may result in personal injury through contact with the rotating blade. The blade control handle must operate easily in both directions and automatically return to the disengaged position when released.

### **SAFE OPERATION PRACTICES FOR PEDESTRIAN-CONTROLLED ROTARY LAWN MOWERS.**

#### **1. Training.**

- Read the instructions carefully. Be familiar with the controls and the proper use of the equipment.
- Never allow children or people unfamiliar with these instructions to use the lawn mower, Local regulations may restrict the age of the operator.  
Never mow while people, especially children, or pets are nearby.
- Keep in mind that the operator or user is responsible for accidents or hazards occurring to other people or their property.

#### **2. Preparation.**

- While mowing, always wear substantial footwear and long trousers. Do not operate the equipment when barefoot or wearing open sandals.
- Thoroughly inspect the area where the equipment is to be used and remove all objects which can be thrown by the machine.

#### **WARNING Petrol is highly flammable:**

- store fuel in containers specifically designed for this purpose;
- refuel outdoors only and do not smoke while refuelling;
- add fuel before starting the engine. Never remove the cap of the fuel tank or add petrol while the engine is running or when the engine is hot;
- if petrol is spilled, do not attempt to start the engine but move the machine away from the area of spillage and avoid creating any source of ignition until petrol vapours have dissipated;
- replace all fuel tank and container caps securely.
- Replace faulty silencers.
- Before using, always visually inspect to see that the blades blade bolts and cutter assembly are not worn or damaged. Replace worn or damaged blades and bolts in sets to preserve balance.

## 5. HEALTH AND SAFETY INFORMATION

---

- On multi-bladed machines, take care as rotating one blade can cause other blades to rotate.

### 3. Operation.

- Do not operate the engine in a confined space where dangerous carbon monoxide fumes can collect.
  - Mow only in daylight or in good artificial light.
  - Avoid operating the equipment in wet grass, where feasible.
  - Always be sure of your footing on slopes. Walk, never run.
  - For wheeled rotary machines, mow across the face of slopes, never up and down.
  - Exercise extreme caution when changing direction on slopes.  
Do not mow excessively steep slopes.
  - Use extreme caution when reversing or pulling the lawn mower towards you.
  - Stop the blade(s) if the lawn mower has to be tilted for transportation when crossing surfaces other than grass, and when transporting the lawn mower to and from the area to be mowed.
  - Never operate the lawn mower with defective guards, or without safety devices, for example deflectors and/or grass catchers, in place.
  - Do not change the engine governor settings or overspeed the engine.
  - Disengage all blade and drive clutches before starting the engine.
  - Start the engine or switch on the motor carefully according to instructions and with feet well away from the blade(s).
  - Do not tilt the lawn mower when starting the engine or switching on the motor; except if the lawn mower has to be tilted for starting. In this case, do not tilt it more than absolutely necessary and lift only the part which is away from the operator.
  - Do not start the engine when standing in front of the discharge chute.
  - Do not put hands or feet near or under rotating parts. Keep clear of the discharge opening at all times.
  - Never pick up or carry a lawn mower while the engine is running.
- Stop the engine and disconnect the spark plug wire, make sure that all moving parts have come to a complete stop and, where a key is fitted remove the key:**
- before cleaning a blockage or unclogging chute;
  - before checking, cleaning or working on the lawn mower;
  - after striking a foreign object. Inspect the lawn mower for damage and make repairs before restarting and operating the lawn mower;
  - if lawn mower starts to vibrate abnormally (check immediately).
- Stop the engine and disconnect the spark plug wire, make sure that all moving parts have come to a complete stop and, where a key is fitted remove the key:
- whenever you leave the lawn mower;
  - before refuelling.
- Reduce the throttle setting during engine shut down and, if the engine is provided with a



## 5. HEALTH AND SAFETY INFORMATION

---

shut-off valve, turn the fuel off at the conclusion of mowing.

- Go slow when using a trailing seat.

### 4. **Maintenance and storage.**

- Keep all nuts, bolts and screws tight to be sure the equipment is in safe working condition.
- Never store the equipment with petrol in the tank inside a building where fumes can reach an open flame or spark.
- Allow the engine to cool before storing in any enclosure.
- To reduce the fire hazard, keep the engine, silencer, battery compartment and petrol compartment and petrol storage area free of grass, leaves, or excessive grease.
- Check the grass catcher frequently for wear or deterioration.
- Replace worn or damaged parts for safety.
- If the fuel tank has to be drained, this should be done outdoors.

## 5. HEALTH AND SAFETY INFORMATION

---

### 5.2 HEALTH AND SAFETY INFORMATION CONCERNING THE USE OF FUELS

Fuels are inflammable and explosive. Reduce the risk of explosion and fire by:

- Turning off and cooling the motor down before filling the tank with fuel.
- Refrain from smoking and starting open fires when handling fuels.
- Store and mix fuels in approved and correspondingly labelled canisters.
- Store fuels in closed containers. Keeping in mind that fuels may evaporate at room temperature and collect on the floor of closed rooms (risk of explosion).
- Start the device at least nine metres away from any stored fuels or flammable liquids.

Fuels are toxic, they contain substances that have an immediate toxic effect and may cause permanent damage to your health. Take all precautionary measures to prevent your body from absorbing any of these substances:

- Refill tank and siphon fuels only outdoors or in well-ventilated rooms.
- Do not inhale fuel fumes.
- Avoid contact with eyes and skin.
- Wear gloves when transferring fuel.
- When fuel has come into contact with your clothes, change them immediately. Clean your clothes before putting them back on.
- Store fuels out of the reach of children.

When handled inappropriately, fuels may cause damage to the environment:

- Transfer fuel carefully. Fuel must never trickle into the ground or the sewage system.
- Dispose of any remaining fuel in an appropriate manner. Never dispose of fuel with regular household waste.
- Fuels may be stored only for a limited time. Purchase only such quantities that can be used up within a few months.

## 6. TECHNICAL DESCRIPTION

---

### 6.1 IDENTIFICATION



① Emergency stop handle.

② Finger nuts.

③ Fuel tank.

④ Fuel tank cap.

⑤ Oil sump cap/dipstick.

⑥ Air filter.

⑦ Spark plug.

⑧ Deck.

⑨ Silencer (muffler).

⑩ Cutting height adjustment.

⑪ Grass catcher.

⑫ Pull start handle.

## 7. UNPACKING AND CHECKING

### 7.1 PACKAGING

**Warning!** This lawn mower is supplied with no oil in the engine. Engine oil of type 10W-40 (SAE 30) must be added to correct level to avoid serious engine damage. That would NOT be covered under warranty.

Carefully remove the machine from the packaging and examine it for any sign of damage that may have happened during shipping. Lay the contents out and check them against the parts shown below. If any part is damaged or missing; please contact the Draper Helpline (the telephone number appears on the Title page) and do not attempt to use the machine.

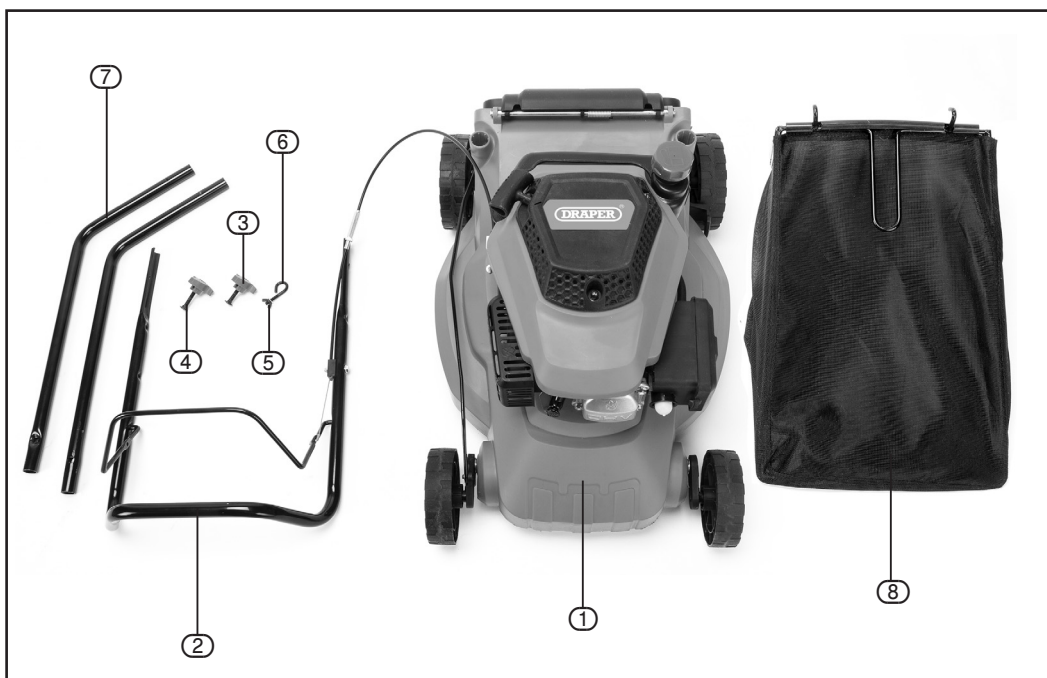
The packaging material should be retained at least during the guarantee period: in case the machine needs to be returned for repair.

**Warning!** Some of the packaging materials used may be harmful to children. Do not leave any of these materials in the reach of children.

If any of the packaging is to be thrown away, make sure they are disposed of correctly; according to local regulations.

### 7.2 WHAT'S IN THE BOX?

The packaging contains several parts and semi-assembled elements that require final assembly. Lay out the contents and check off the items against those featured below.



- |                          |                             |
|--------------------------|-----------------------------|
| ① Main mower motor/body. | ⑤ Nut                       |
| ② Upper handle section.  | ⑥ Pull start retainer hook. |
| ③ Finger nuts.           | ⑦ Lower handle section.     |
| ④ Bolts (long).          | ⑧ Grass catcher.            |

## 8. ASSEMBLING THE LAWN MOWER

### 8.1 FOLDING HANDLE (FIG.1)

Position the lower handle bars adjacent to the mounting bracket.

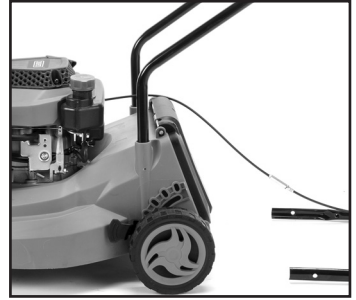


FIG.1

### 8.2 ADJUSTMENT STRUCTURE (FIG.2)

The adjustment structure is for adjusting operation height/angle of the main handle to suit the users comfort.

Select the most comfortable fixing angle for your particular height (upper handle needs to be fitted to check handle height comfort).



FIG.2

Fix the lower handlebars by fitting the small bolts into the fixing holes in deck flange and lower handle assembly and turning the screw with a screwdriver (not supplied) (**Fig.3**).



FIG.3

The upper handle is attached to the lower handle by means of finger nuts (2) and bolts (4). Position the upper handle over the outside of the lower handle as shown in (**Fig.4**) and attach using the finger nuts and bolts supplied.

Loosen the two finger nuts to allow the upper and lower handle sections to be unfolded.

Re-tighten the finger nuts to secure the upper and lower handle sections into their position. (**Fig.4**).

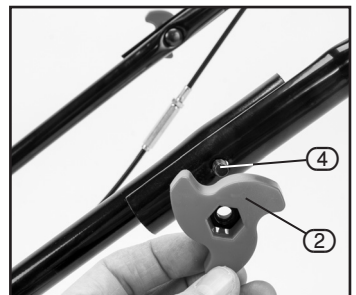


FIG.4

## 8. ASSEMBLING THE LAWN MOWER

### 8.3 MOUNTING AND DISMOUNTING THE GRASS BAG (FIGS 5 & 6)

To fit: Raise the rear cover and hitch the grass bag on rear of mower.

Lower the sprung plastic rear flap to secure the grass bag in position.



FIG.5



FIG.6

### 8.4 STARTER HANDLE SUPPORT (FIG.7)

Feed the threaded section of the starter handle support (8) through the hole in the right upper handle and secure with nut (7) ensuring the loop is on the inside of the handle frame.

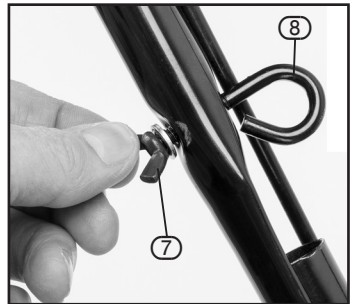


FIG.7

### 8.5 HEIGHT OF CUT (FIG.8)

Apply outward pressure to disengage lever from rack. Move lever forward or back to adjust height.

There are 5 cutting heights to select and they range from 25 - 75mm.



FIG.8

# 9. LAWN MOWER INSTRUCTION

## 9.1 BEFORE STARTING

This machine is not 2 stroke - fuel & oil must **not** be mixed.

This lawn mower is fitted with a air cooled 4 stroke petrol engine.  
Engine oil should be a high grade ISO VG 100 (SAE 30/10W-40).

**Important:** The engine is supplied without any oil and must be filled before attempting to start. Failure to do so may result in permanent engine damage, which will not be covered under warranty.

Remove the oil tank cap with integral dipstick. Fill the oil tank with the aid of a funnel. Replace the oil tank cap (the cap must be fully tightened to register the correct level). Top up accordingly until the max. level is achieved.

**Warning:** Do not overfill. Doing so may cause the engine not to start or cause damage.

**Note:** Ensure you clean up any spilt oil.

Use only fresh, clean, good quality unleaded fuel.

**Warning:** Never refuel In close proximity to naked flames, sparks or sources of ignition e.g. cigarettes.

Remove fuel filling cap and fill with fresh clean unleaded fuel. Fill so the level of the fuel comes to approximately 1 inch (2.5cm) below the lowest part of the tank neck; this allows for any fuel expansion. A semi-synthetic oil is recommended for this product. **(Fig.9)**.

**WARNING:** Never fill fuel tank indoors, with engine running or until the engine has been allowed to cool for a least 15 minutes after running.



FIG.9

## 9.2 START, RUN AND STOP POSITION (FIG.10)

Standing behind the unit, grasp the emergency stop handle **(B)** and hold it against the upper handle as shown.

Grasp the starter cord handle **(A)** and pull up rapidly.

Return it slowly to the rope guide bolt after engine starts.

Release the emergency stop handle to stop the engine and blade.

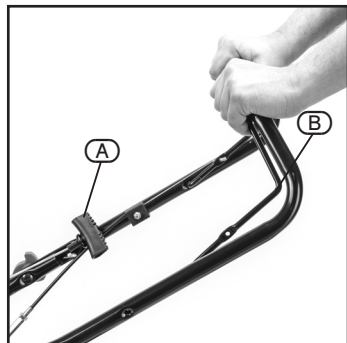


FIG.10

## 9. LAWN MOWER INSTRUCTION

### 9.3 OPERATION PROCEDURES

During operation, tightly hold the emergency stop handle with both hands.

**Note:** During operation, when the emergency stop handle is released, the engine will stop and thus stopping the lawn mower from operating.

### 9.4 TO STOP ENGINE

**Caution:** The blade continues to rotate for a few seconds after the engine is shut off.

Release the emergency stop handle to stop the engine and blade.

Disconnect and ground the spark plug wire to prevent accidental starting while equipment is unattended.

### 9.5 GRASS CATCHER (FIG.12)

Empty and clean the bag, make sure it is clean and ensure its meshwork is ventilated.

### 9.6 DECK

The underside of the mower deck should be cleaned after each use to prevent a buildup of grass clippings, leaves, dirt or other matter. If this debris is allowed to accumulate, it will invite rust and corrosion, and may prevent proper cutting. The deck may be cleaned by tilting the mower and scraping clean with a suitable tool (make certain the spark plug wire is disconnected). See section 10.1.

### 9.7 HEIGHT ADJUSTMENT INSTRUCTIONS (FIG.13)

**Caution:** (Do not at any time make any adjustment to lawn mower without first stopping the engine and disconnecting the spark plug wire).

Your mower is equipped with a central height adjustment lever offering 5 height positions.

1. Stop mower and disconnect spark plug cable before changing mower cutting height.
2. The central height adjustment lever offers you 5 different height positions.
3. To change the height of cut, squeeze adjuster lever toward the wheel, moving up or down to selected height. All wheels will be in the same height of cut.



FIG.11



FIG.12



FIG.13



# 10. MAINTENANCE

## 10.1 SPARK PLUG

Use only original replacement spark plug. For best results, replace the spark plug every 100 hours of use.

## 10.2 LUBRICATION INSTRUCTIONS

**CAUTION: DISCONNECT SPARK PLUG BEFORE SERVICING.**

### 1. Wheels

Lubricate the ball bearings in each wheel at least once a season with a light oil.

### 2. Engine

Maintain the engines sump oil up to the level indicated (use oil grade 10W-40) (**Fig.14**).

### 3. Control Handles

Lubricate the pivot points on the control handles and the cables at least once a season with light oil. The control handles must operate freely in both directions.

## 10.3 CLEANING

To clean blade, gently wipe blade with a damp cloth to remove any grass deposits.

**Note:** This method of cleaning will suffice throughout the season, but thorough cleaning should be undertaken before storage for the off season.

**Caution:** Do not hose engine. Water can damage engine or contaminate the fuel system.

1. Wipe deck with dry cloth.
2. Hose under deck by tilting the mower so that the air filter is up.

**Caution:** Do not tilt mower too much, this may cause fuel/oil/air filter contamination.

## 10.4 ENGINE AIR CLEANER

**Caution:** Do not allow dirt or dust to clog the air filter foam element.

The engine air cleaner element must be serviced (cleaned) after 25 hours normal mowing. The foam element must be serviced regularly if the mower is used in dry dusty conditions.

## 10.5 CLEAN AIR FILTER

1. Press down the two tabs on sides of the filter cover. Remove cover (**Figs.15 & 16**).
2. Wash filter element in soap water. **DO NOT USE FUEL!!**
3. Air dry filter element.
4. Place a few drops of SAE30 oil on the foam filter and squeeze tightly to remove any excess oil.
5. Reinstall filter (**Fig.17**).

**Note:** Replace filter if frayed, torn, damaged or unable to be cleaned.

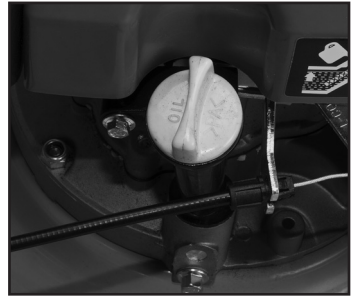


FIG.14

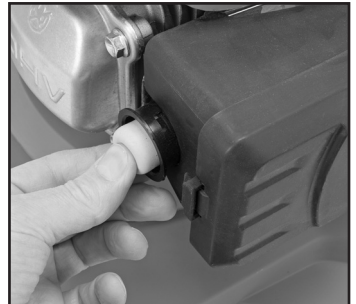


FIG.15



FIG.16



FIG.17

# 10. MAINTENANCE

## 10.6 CUTTING BLADE MAINTENANCE (FIG 18)

**Caution:** Be sure to disconnect and ground the spark plug wire before working on the cutting blade to prevent accidental engine starting. Protect hands by using heavy gloves or a rag to grasp the cutting blades.

Remove the hex head and washer which hold the blade and blade adapter to the engine crankshaft. Remove the blade and adapter from the crankshaft.

**Warning:** Periodically inspect the blade adaptor for cracks, especially if you strike a foreign object. Replace when necessary (Stock Nos.69031 for 66171 and 66172, Stock No.68598 for 66173).

For best results your blade should be sharp. The blade may be resharpened by removing it and either grinding or filing the cutting edge keeping as close to the original bevel as possible. It is extremely important that each cutting edge receives an equal amount of grinding to prevent an unbalanced blade. Improper blade balance will result in excessive vibration causing eventual damage to the engine and mower. Be sure to carefully balance blade after sharpening. The blade can be tested for balance by balancing it on a round shaft screwdriver. Remove metal from the heaviest side evenly.



FIG.18

## 10.7 CUTTING BLADE

Before reassembling the blade and the blade adapter to the unit, lubricate the engine crankshaft and the inner surface of the blade adapter with light oil. Install the blade adapter on the crankshaft with the "star" away from the engine. Refer to (Fig.19). Place the blade with the part number facing away from the adapter. Align the washer over the blade and insert the hex bolt. Tighten the hex bolt to the torque listed on page 19 (10.8).

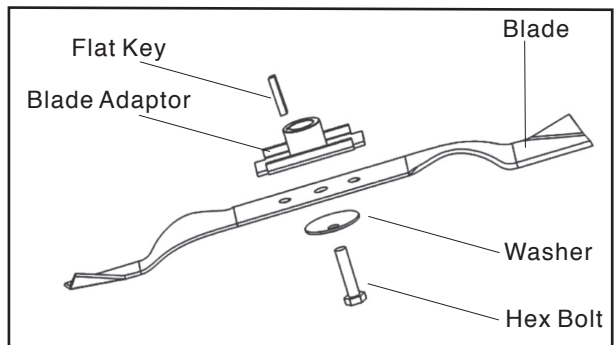


FIG.19

# 10. MAINTENANCE

---

## 10.8 BLADE MOUNTING TORQUE

Centre Bolt 40Nm.min, 54Nm.max. To insure safe operation of your unit, ALL nuts and bolts must be checked periodically for correct tightness. After prolonged use, especially in sandy soil conditions, the blade will become worn and lose some of the original shape. Cutting efficiently will be reduced and the blade should be replaced. Replace with an approved factory replacement blade only. The replacement blade is Stock No.69031 for 66171 and 66172, Stock No.68598 for 66173.

**Warning:** Do not touch rotating blade.

## 10.9 FUEL AND LUBRICATION

This machine is not 2 stroke - fuel & oil must **not** be mixed.

This lawn mower is fitted with a air cooled 4 stroke petrol engine.

Engine oil should be a high grade ISO VG 100 (SAE 30/10W-40).

**Important:** The engine is supplied without any oil and must be filled before attempting to start. Failure to do so may result in permanent engine damage, which will not be covered under warranty.

Remove the oil tank cap with integral dipstick. Fill the oil tank with the aid of a funnel. Replace the oil tank cap (the cap must be fully tightened to register the correct level). Top up accordingly until the max. level is achieved.

**Warning:** Do not overfill. Doing so may cause the engine not to start or cause damage.

**Note:** Ensure you clean up any spilt oil.

Use only fresh, clean, good quality unleaded fuel.

**Warning:** Never refuel In close proximity to naked flames, sparks or sources of ignition e.g. cigarettes.

Remove fuel filling cap and fill with fresh clean unleaded fuel. Fill so the level of the fuel comes to approximately 1 inch (2.5cm) below the lowest part of the tank neck; this allows for any fuel expansion. A semi-synthetic oil is recommended for this product.

## 10.10 STORAGE INSTRUCTIONS (OFF SEASON)

The following steps should be taken to prepare lawn mower for storage.

1. Following the final cut of the season allow the fuel tank to run dry.
2. Clean and lubricate mower thoroughly as described in the lubrication instructions.
3. Remove fuel from fuel tank before storing mower.
4. Lightly coat mower's cutting blade with oil to prevent rusting.
5. Store mower in a dry, clean area.

**Note:** When storing any type of power equipment in an unventilated or material storage shed. Care should be taken to rust-proof the equipment. Using a light oil or silicone, coat the equipment, especially cables and all moving parts. Be careful not to bend or kink cables. If the starter rope becomes disconnected from rope guide on handle, disconnect and ground the spark plug wire, Depress the blade control handle and pull the starter rope out from engine slowly. Slip the starter rope into the rope guide bolt on handle.

# 11. TROUBLESHOOTING

## 1.1 TROUBLESHOOTING

<b>Problem.</b>	<b>Probable Cause.</b>	<b>Remedy Suggested</b>
Engine fails to start.	<ol style="list-style-type: none"><li>1. Throttle choke not in the correct position for the prevailing conditions.</li><li>2. Fuel tank is empty.</li><li>3. Air cleaner element is dirty.</li><li>4. Spark plug loose.</li><li>5. Spark plug wire loose or disconnected from plug.</li><li>6. Spark plug gap is incorrect.</li><li>7. Spark plug is defective.</li><li>8. Carburettor is flooded with fuel.</li><li>9. Faulty ignition module.</li></ol>	<ol style="list-style-type: none"><li>1. Move throttle choke to correct position.</li><li>2. Fill tank with fuel.</li><li>3. Clean air cleaner element.</li><li>4. Tighten spark plug to 25-30 Nm.</li><li>5. Install spark plug wire on spark plug.</li><li>6. Set gap between electrodes at 0.7 to 0.8mm.</li><li>7. Install new, correctly gapped plug.</li><li>8. Remove air cleaner element and pull starter rope continuously until carburettor clears itself and install.</li><li>9. Contact the service agent.</li></ol>
Engine difficult to start or loses power.	<ol style="list-style-type: none"><li>1. Dirt, water, or stale fuel tank.</li><li>2. Vent hole in fuel tank cap is plugged.</li><li>3. Air cleaner element is dirty.</li></ol>	<ol style="list-style-type: none"><li>1. Drain fuel and clean tank. Fill tank with clean, fresh fuel.</li><li>2. Clean or replace fuel tank cap.</li><li>3. Clean air cleaner element.</li></ol>
Engine operates erratically.	<ol style="list-style-type: none"><li>1. Spark plug is defective.</li><li>2. Spark plug gap is incorrect.</li><li>3. Air cleaner element is dirty.</li></ol>	<ol style="list-style-type: none"><li>1. Install new, correctly gapped plug.</li><li>2. Set gap between electrodes at 0.7 to 0.8mm.</li><li>3. Clean air cleaner element.</li></ol>
Engine idles poorly.	<ol style="list-style-type: none"><li>1. Air cleaner element is dirty.</li><li>2. Air slots in engine shroud are blocked</li><li>3. Cooling fins and air passages under engine blower housing are blocked.</li><li>4. Gap between electrodes of spark plug is too close.</li></ol>	<ol style="list-style-type: none"><li>1. Clean air cleaner element.</li><li>2. Remove debris from slots.</li><li>3. Remove debris from cooling fins and air passages.</li><li>4. Set gap between electrodes at 0.7 to 0.8mm.</li></ol>
Engine overheats.	<ol style="list-style-type: none"><li>1. Cooling air flow is restricted.</li><li>2. Incorrect spark plug.</li></ol>	<ol style="list-style-type: none"><li>1. Remove any debris from slots in shroud, blower housing, air passages.</li><li>2. Install correct spark plug. F7RTC or equivalent.</li></ol>
Mower vibrates assembly.	<ol style="list-style-type: none"><li>1. Cutting assembly is loose.</li><li>2. Cutting assembly is unbalanced.</li></ol>	<ol style="list-style-type: none"><li>1. Tighten blade.</li><li>2. Balance blade.</li></ol>

# 12. EXPLANATION OF SYMBOLS

## 12.1 EXPLANATION OF SYMBOLS



Read operator's manual.



When mowing, please wear the glasses and ear plugs to defend the operator himself.



Pay more attention to the operator's hands and feet to avoid injury.



When repairing, please remove the spark plug, then repair it according to operational manual.



Keep bystanders away.



Do not expose to rain.



Fuel is flammable, keep fire away. Do not use this machine on slopes greater than 16.7°.



WEEE  
Do not dispose of Waste Electrical & Electronic Equipment in with domestic rubbish



Toxic fumes.



Don't operate inside house.



Caution: Engine hot.



Safety label found on lawn mower:  
KEEP HANDS AND FEET AWAY.

# 13. DISPOSAL

---

## 13.1 DISPOSAL

- At the end of the machine's working life, or when it can no longer be repaired, ensure that it is disposed of according to national regulations.
- Contact your local authority for details of collection schemes in your area.

In all circumstances:

- Do not dispose of power tools with domestic waste.
- Do not incinerate.
- Do not abandon in the environment.



## CONTACTS

Draper Tools Limited, Hursley Road,  
Chandler's Ford, Eastleigh, Hampshire. SO53 1YF. U.K.

Helpline: (023) 8049 4344

Sales Desk: (023) 8049 4333

Internet: [drapertools.com](http://drapertools.com)

E-mail: [sales@drapertools.com](mailto:sales@drapertools.com)

General Enquiries: (023) 8026 6355

Service/Warranty Repair Agent:

For aftersales servicing or warranty repairs, please contact the  
Draper Tools Helpline for details of an agent in your local area.

YOUR DRAPER STOCKIST

KCDH0318

©Published by Draper Tools Limited.

No part of this publication may be reproduced, stored in a retrieval system or transmitted in any form or by any means, electronic, mechanical photocopying, recording or otherwise without prior permission in writing from Draper Tools Ltd.