



SPARE PARTS LISTING SHEET FOR

230V 450W

Bench Mounted Bobbin Sander

Stock No.10773

Part No.BBS450A

| KEY No. | PART No. | STOCK No. | DESCRIPTION |
|---------|--------------|-----------|---------------------------------|
| 1 | YBBS450A-01 | 11808 | Nut. |
| 1A | YBBS450A-01A | 33111 | Retaining ring (Spring washer). |
| 2 | YBBS450A-02 | 11813 | Upper spindle washer. |
| 4 | YBB5450A-04A | 07461 | Rubber spindle 12.7mm |
| 4 | YBBS450A-04B | 11814 | Rubber spindle 19.05mm. |
| 4 | YBBS450A-04C | 12003 | Rubber spindle 25.4mm. |
| 4 | YBBS450A-04D | 12004 | Rubber spindle 38.1mm. |
| 4 | YBBS450A-04E | 12005 | Rubber spindle 50.8mm. |
| 4 | YBBS450A-04F | 12006 | Rubber spindle 76.2mm. |
| 5 | YBBS450A-05 | 11815 | Throat plate 12.7mm. |
| 5 | YBBS450A-05 | 12007 | Throat plate 19.05mm. |
| 5 | YBBS450A-05 | 12008 | Throat plate 25.4mm. |
| 5 | YBBS450A-05 | 12009 | Throat plate 38.1mm. |
| 5 | YBBS450A-05 | 12010 | Throat plate 50.8mm. |
| 5 | YBBS450A-05 | 12011 | Throat plate 76.2mm. |
| 6 | YBBS450A-06 | 11816 | Lower spindle washer. |
| 7 | YBBS450A-07 | 11817 | Table. |
| 8 | YBBS450A-08 | 11818 | Dust washer. |
| 9 | YBBS450A-09 | 11819 | Dust cover. |
| 10 | YBBS450A-10 | 11820 | Washer. |
| 11 | YBBS450A-11 | 11821 | Spring washer. |
| 12 | YBBS450A-12 | 11822 | Screw. |
| 13 | YBBS450A-13 | 11823 | Belt. |
| 14 | YBBS450A-14 | 11824 | Belt. |
| 15 | YBBS450A-15 | 11825 | Belt wheel. |
| 16 | YBBS450A-16 | 11826 | Spring washer. |
| 17 | YBBS450A-17 | 11827 | Tension roller assembly. |
| 18 | YBBS450A-18 | 11828 | Screw. |
| 19 | YBBS450A-19 | 11829 | Orientation plate assembly. |
| 20 | YBBS450A-20 | 11830 | Screw. |
| 21 | YBBS450A-21 | 11831 | Washer. |
| 22 | YBBS450A-22 | 11832 | Spring washer. |
| 23 | YBBS450A-23 | 11833 | Screw. |
| 24 | YBBS450A-24 | 11834 | Cable clamp. |
| 25 | YBBS450A-25 | 11835 | Screw. |
| 26 | YBBS450A-26 | 11836 | Bearing. |
| 27 | YBBS450A-27 | 11837 | Spring washer. |

| KEY No. | PART No. | STOCK No. | DESCRIPTION |
|---------|-------------|-----------|--------------------|
| 28 | YBBS450A-28 | 11838 | Armature assembly. |
| 29 | YBBS450A-29 | 11839 | Bearing. |
| 30 | YBBS450A-30 | 11840 | Connection plate. |
| 31 | YBBS450A-31 | 11843 | Field assembly. |
| 32 | YBBS450A-32 | 11851 | Rear cover. |
| 33 | YBBS450A-33 | 11869 | Brush holder. |
| 34 | YBBS450A-34 | 11877 | Carbon brush. |
| 35 | YBBS450A-35 | 11885 | Brush spring. |
| 36 | YBBS450A-36 | 11892 | Cable clamp. |
| 37 | YBBS450A-37 | 11893 | Washer. |
| 38 | YBBS450A-38 | 11894 | Screw. |
| 39 | YBBS450A-39 | 11896 | Washer. |
| 40 | YBBS450A-40 | 11897 | Screw. |
| 41 | YBBS450A-41 | 11900 | Screw. |
| 42 | YBBS450A-42 | 11901 | Bearing cover. |
| 43 | YBBS450A-43 | 11902 | Spacer. |
| 44 | YBBS450A-44 | 11904 | Washer. |
| 45 | YBBS450A-45 | 11905 | Bearing. |
| 46 | YBBS450A-46 | 11906 | Bearing support. |
| 47 | YBBS450A-47 | 11907 | Screw. |
| 48 | YBBS450A-48 | 11908 | Bearing sleeve. |
| 49 | YBBS450A-49 | 11916 | Spring. |
| 50 | YBBS450A-50 | 11918 | Spring washer. |
| 51 | YBBS450A-51 | 11920 | Spindle washer. |
| 52 | YBBS450A-52 | 11921 | Screw. |
| 53 | YBBS450A-53 | 11922 | Wheel plate. |
| 54 | YBBS450A-54 | 11923 | Wheel. |
| 55 | YBBS450A-55 | 11924 | Spindle. |
| 56 | YBBS450A-56 | 11925 | Pin. |
| 57 | YBBS450A-57 | 11926 | Wheel. |
| 58 | YBBS450A-58 | 11927 | Bearing sleeve. |
| 59 | YBBS450A-59 | 11928 | Wheel plate. |
| 60 | YBBS450A-60 | 11941 | Screw. |
| 61 | YBBS450A-61 | 11942 | Screw. |
| 62 | YBBS450A-62 | 11945 | Bearing support. |
| 63 | YBBS450A-63 | 11946 | Bearing. |

Helpline: (023) 8049 4344. Sales Desk: (023) 8049 4333. General Enquiries: (023) 8026 6355.



SPARE PARTS LISTING SHEET FOR

230V 450W

Bench Mounted Bobbin Sander

Stock No.10773

Part No.BBS450A

| KEY No. | PART No. | STOCK No. | DESCRIPTION | KEY No. | PART No. | STOCK No. | DESCRIPTION |
|---------|-------------|-----------|--------------------|---------|-------------|-----------|--------------------|
| 64 | YBBS450A-64 | 11947 | Washer. | 80 | YBBS450A-80 | 11989 | Switch. |
| 65 | YBBS450A-65 | 11948 | Spacer. | 81 | YBBS450A-81 | 11990 | Orientation plate. |
| 66 | YBBS450A-66 | 11949 | Wheel support. | 82 | YBBS450A-82 | 11991 | Switch cover. |
| 67 | YBBS450A-67 | 11950 | Wire assembly. | 83 | YBBS450A-83 | 11992 | Screw. |
| 68 | YBBS450A-68 | 11968 | Wire assembly. | 85 | YBBS450A-85 | 11993 | Cable clamp. |
| 69 | YBBS450A-69 | 11976 | Rectifier. | 86 | YBBS450A-86 | 11994 | Screw. |
| 70 | YBBS450A-70 | 11978 | Screw. | 87 | YBBS450A-87 | 11995 | Cable gland. |
| 71 | YBBS450A-71 | 11979 | Wire assembly. | 88 | YBBS450A-88 | 11996 | Screw. |
| 72 | YBBS450A-72 | 11980 | Wire assembly. | 89 | YBBS450A-89 | 11997 | Foot. |
| 73 | YBBS450A-73 | 11983 | Plug and cable. | 90 | YBBS450A-90 | 11998 | Washer. |
| 74 | YBBS450A-74 | 11984 | Cable clamp. | 91 | YBBS450A-91 | 11999 | Spring washer. |
| 75 | YBBS450A-75 | 11985 | Switch plate. | 92 | YBBS450A-92 | 12000 | Screw. |
| 76 | YBBS450A-76 | 11986 | Base housing. | 93 | YBBS450A-93 | 12001 | Bottom plate. |
| 79 | YBBS450A-79 | 11988 | Orientation plate. | 94 | YBBS450A-94 | 12002 | Screw. |

Helpline: (023) 8049 4344. Sales Desk: (023) 8049 4333. General Enquiries: (023) 8026 6355.

DRAPER TOOLS LTD, HURSLEY ROAD, CHANDLER'S FORD, EASTLEIGH, HANTS. SO53 1YF. U.K. internet: www.draper.co.uk e-mail: sales@drapertools.com

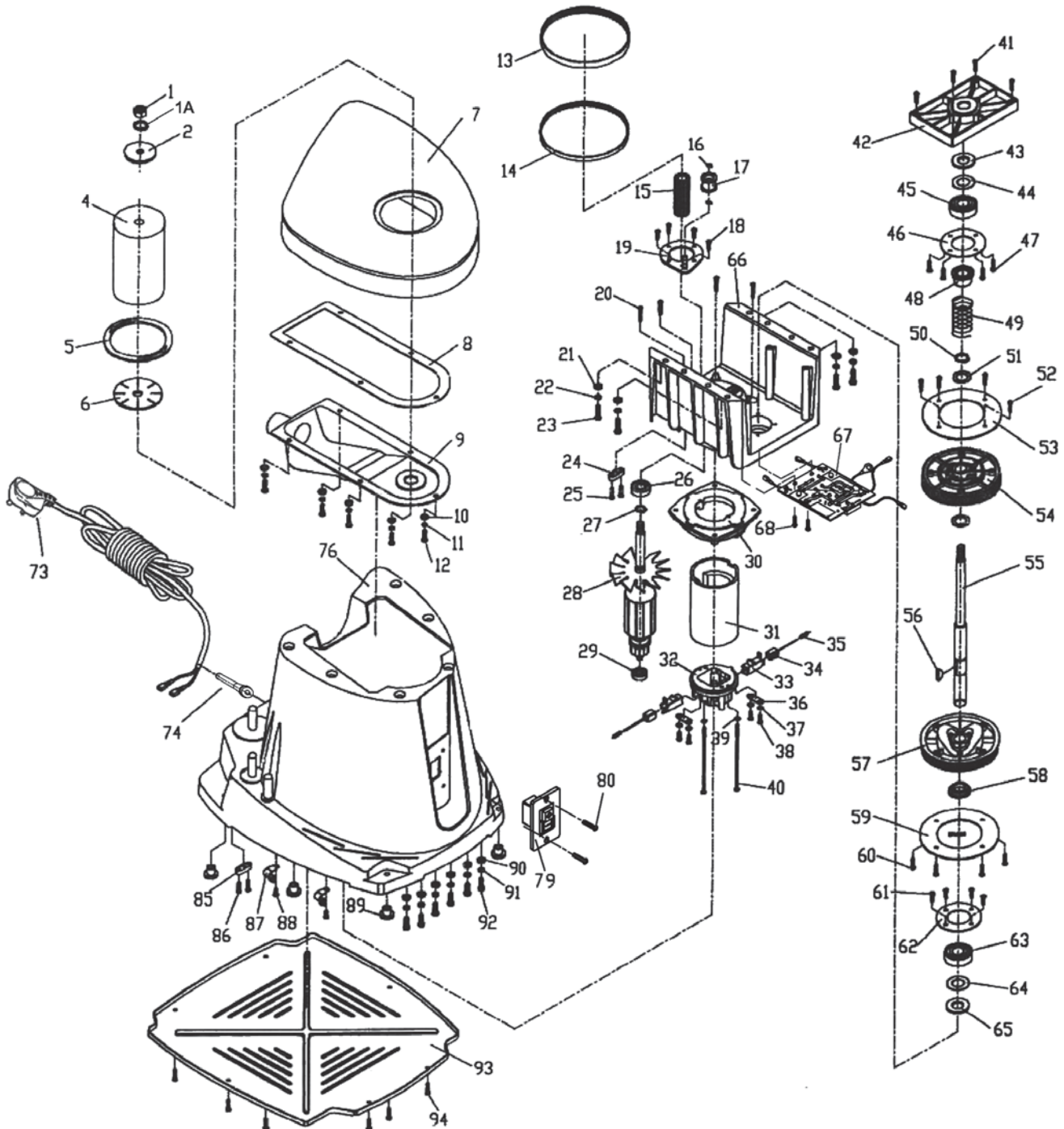


SPARE PARTS DRAWING SHEET FOR

230V 450W Bench Mounted Bobbin Sander

Stock No.10773

Part No.BBS450A



Helpline: (023) 8049 4344. Sales Desk: (023) 8049 4333. General Enquiries: (023) 8026 6355.

DRAPER TOOLS LTD, HURSLEY ROAD, CHANDLER'S FORD, EASTLEIGH, HANTS. SO53 1YF. U.K website: www.drapertools.com e-mail: sales@drapertools.com

DKDH300513