



SPARE PARTS LISTING SHEET FOR
25.4cc 250mm
Petrol Chainsaw

Stock No. 15042

Part No. CSP2625

KEY No.	PART No.	STOCK No.	DESCRIPTION
17	YCSP2625-17	15145	Washer muffler
18	YCSP2625-18	15146	Muffler
19	YCSP2625-19	15147	Shield muffler
20	YCSP2625-20	15148	Screw m5 x 40
21	YCSP2625-21	15149	Spark plug
22	YCSP2625-22	15150	Air hose
23	YCSP2625-23	15151	Screw m4 x 14
24	YCSP2625-24	15152	Electric ignition pad
25	YCSP2625-25	15153	Electric ignition
26	YCSP2625-26	15154	Stop wire
27	YCSP2625-27	15155	Washer 4
28	YCSP2625-28	15156	Gasket 4
29	YCSP2625-29	15157	Screw m4 x 20
30	YCSP2625-30	15158	Screw m4 x 14
31	YCSP2625-31	15159	Screw st4.8 x 13
32	YCSP2625-32	15160	Safety belt
33	YCSP2625-33	15161	Screw m5 x 20
34	YCSP2625-34	15163	Crank case
35	YCSP2625-35	15165	Hex ring spanner m5 x 14
36	YCSP2625-36	15166	Pothook
37	YCSP2625-37	15167	Screw at4.2 x 13
38	YCSP2625-38	15168	Rubber pad
39	YCSP2625-39	15169	Screw st4.8 x 16
40	YCSP2625-40	15170	Plug pad
41	YCSP2625-41	15171	Chain catcher
42	YCSP2625-42	15172	Screw st5.5 x 15
43	YCSP2625-43	15173	Oil pump sponge washer
44	YCSP2625-44	15174	Oil pump washer
45	YCSP2625-45	15175	Oil pump
46	YCSP2625-46	15176	Chain oil outlet pipe
47	YCSP2625-47	15177	Oil pump washer
48	YCSP2625-48	15178	Oil pump shield
49	YCSP2625-49	15179	Worm gear
50	YCSP2625-50	15180	Needle bearing
51	YCSP2625-51	15181	Drum clutch cover

KEY No.	PART No.	STOCK No.	DESCRIPTION
52	YCSP2625-52	15182	Drum clutch washer
53	YCSP2625-53	15183	Clutch support
54	YCSP2625-54	15184	Drum clutch spring
55	YCSP2625-55	15185	Clutch retainer
56	YCSP2625-56	15186	Carburetor oil vacuole
57	YCSP2625-57	15187	Intake boot
58	YCSP2625-58	15188	Oil hose tie in
59	YCSP2625-59	15189	Oil return tube
61	YCSP2625-61	15190	Air gasket hose
62	YCSP2625-62	15191	Bar plate
63	YCSP2625-63	15192	Screw st4.2 x 11
64	YCSP2625-64	15193	Valve vent
65	YCSP2625-65	15194	Aerate spigot snap ring
66	YCSP2625-66	15195	Aerate spigot sponge
67	YCSP2625-67	15196	Screw st5 x 13
68	YCSP2625-68	15197	Wood catcher
70	YCSP2625-70	15198	Balance support
71	YCSP2625-71	15199	Balancer upper
72	YCSP2625-72	15200	Vent valve
73	YCSP2625-73	15201	Balancer lower
74	YCSP2625-74	15202	Filter
75	YCSP2625-75	15203	Clutch support
76	YCSP2625-76	15206	Oil hose
77	YCSP2625-77	15207	Oil hose support
78	YCSP2625-78	15208	Fuel cap
79	YCSP2625-79	15209	Fuel gasket
80	YCSP2625-80	15210	Fuel pat
81	YCSP2625-81	15211	Oil cap
82	YCSP2625-82	15218	Oil cap gasket
83	YCSP2625-83	15219	Screw st4.8 x 16
84	YCSP2625-84	15221	Oil filter toil
85	YCSP2625-85	15388	Oil filter
86	YCSP2625-86	15389	Chain oil hose support
87	YCSP2625-87	15391	Ground wire
88	YCSP2625-88	15392	Starter handle

Helpline: (023) 8049 4344. Sales Desk: (023) 8049 4333. General Enquiries: (023) 8026 6355.

DRAPER TOOLS LTD, HURSLEY ROAD, CHANDLER'S FORD, EASTLEIGH, HANTS. SO53 1YF. U.K website: www.drapertools.com e-mail: sales@drapertools.com



SPARE PARTS LISTING SHEET FOR

25.4cc 250mm Petrol Chainsaw

Stock No.15042

Part No.CSP2625

KEY No.	PART No.	STOCK No.	DESCRIPTION
89	YCSP2625-89	N/A	Rope starter
90	YCSP2625-90	N/A	Guide bush rope
91	YCSP2625-91	N/A	Screw St4.2 x 16
92	YCSP2625-92	N/A	Housing starter
93	YCSP2625-93	N/A	Baffler fan
94	YCSP2625-94	N/A	Hose seat fan
95	YCSP2625-95	N/A	Spring starter
96	YCSP2625-96	N/A	Cover spring starter
97	YCSP2625-97	N/A	Pulley starter
98	YCSP2625-98	N/A	GB/T96 Washers (5 x 16)
99	YCSP2625-99	15396	Paper gasket
100	YCSP2625-100	15397	Cover top
101	YCSP2625-101	15398	Rear handle
102	YCSP2625-102	15399	Stop switch
104	YCSP2625-104	15400	Trigger
105	YCSP2625-105	15403	Trigger spring
106	YCSP2625-106	15404	Cotter pin 5 x 25
107	YCSP2625-107	15409	Trigger safety lever
108	YCSP2625-108	15411	Rear handle cover
109	YCSP2625-109	15412	Carburettor oil hose
110	YCSP2625-110	15414	Carburettor hose pilsse
112	YCSP2625-112	15417	Carburettor
113	YCSP2625-113	15418	Carburettor sponge
114	YCSP2625-114	15419	Air filter-a
115	YCSP2625-115	15420	Air filter cover
116	YCSP2625-116	15421	Plate
117	YCSP2625-117	15424	Screw st4.8 x 16
118	YCSP2625-118	15425	Screw m5 x 44
119	YCSP2625-119	15426	Air filter-b
120	YCSP2625-120	15427	Air filter cover

KEY No.	PART No.	STOCK No.	DESCRIPTION
121	YCSP2625-121	15428	Air filter knob
122	YCSP2625-122	15429	Choke knob grommet
123	YCSP2625-123	15430	Choke knob
124	YCSP2625-124	15432	Throttle rod
125	YCSP2625-125	15433	Handle
126	YCSP2625-126	15434	Leverage
127	YCSP2625-127	15435	Spring(brake) pusher b
128	YCSP2625-128	15436	Straight pin 3 x 14
129	YCSP2625-129	15437	Straight pin 3 x 9
130	YCSP2625-130	15438	Spring(brake) pusher a
131	YCSP2625-131	15439	Leverage pin
132	YCSP2625-132	15440	Leverage pin
133	YCSP2625-133	15442	Screw m5 x 30
134	YCSP2625-134	15443	Brake housing assembly
135	YCSP2625-135	15444	Leverage compress spring
136	YCSP2625-136	15445	Brake leverage
137	YCSP2625-137	15446	Spring support
138	YCSP2625-138	15447	Leverage compress spring
139	YCSP2625-139	15450	Leverage spring
140	YCSP2625-140	15451	Nylon nut m5
141	YCSP2625-141	15452	Screw chain adjusting
142	YCSP2625-142	15453	Tooth chain adjusting
143	YCSP2625-143	15454	Screw chain adjusting
144	YCSP2625-144	15455	Bar plate
145	YCSP2625-145	15456	Chain brake cover
146	YCSP2625-146	15458	Brake plate
147	YCSP2625-147	15461	Actuation spring
148	YCSP2625-148	15462	Brake band
149	YCSP2625-149	15467	Starter assembly

Helpline: (023) 8049 4344. Sales Desk: (023) 8049 4333. General Enquiries: (023) 8026 6355.

DRAPER TOOLS LTD, HURSLEY ROAD, CHANDLER'S FORD, EASTLEIGH, HANTS. SO53 1YF. U.K website: www.drapertools.com e-mail: sales@drapertools.com

KCCH0516

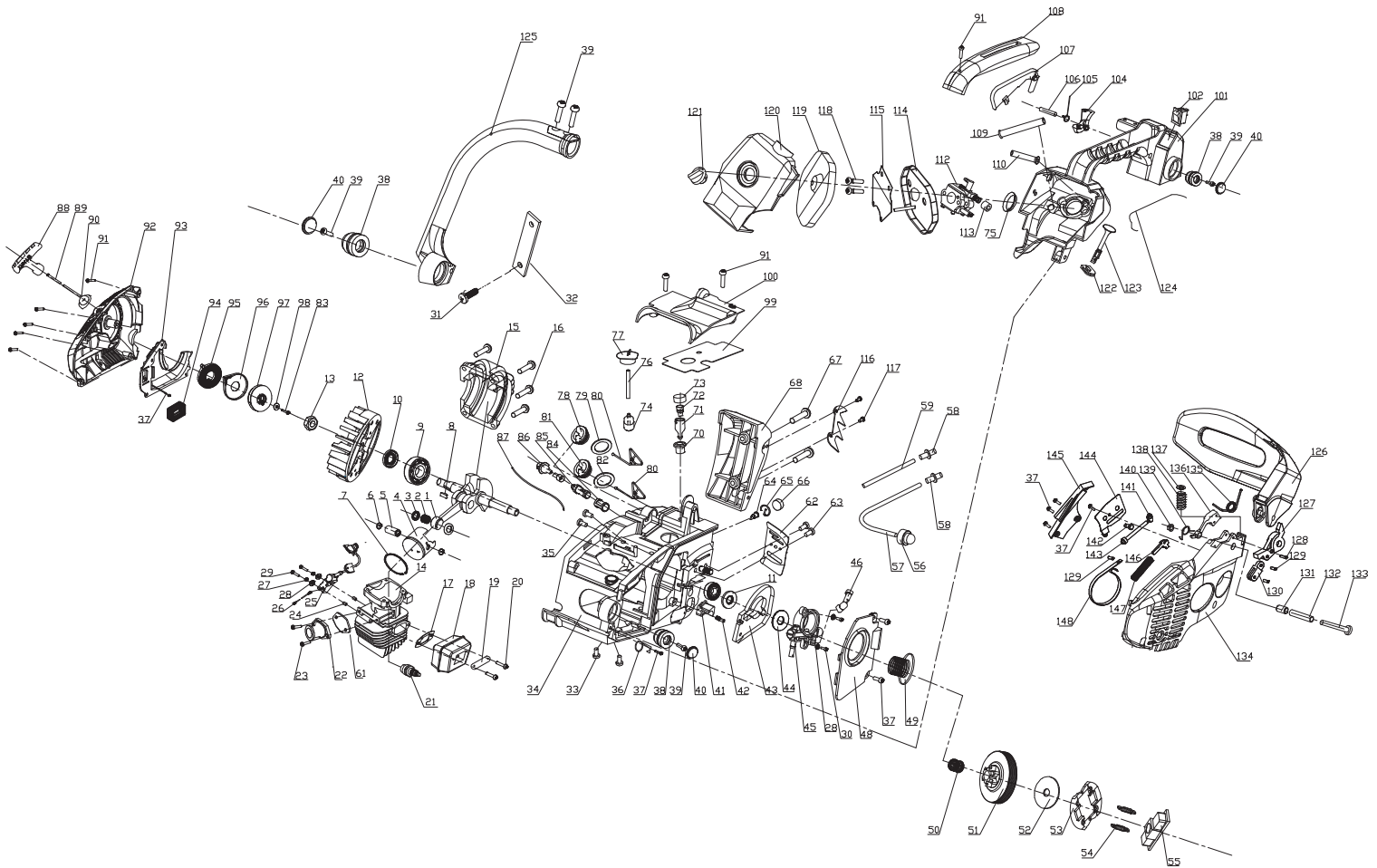


SPARE PARTS LISTING/DRAWING SHEET FOR

25.4cc 250mm Petrol Chainsaw

Stock No.15042

Part No.CSP2625



KEY No.	PART No.	STOCK No.	DESCRIPTION
1	YCSP2625-01	15129	Crank shaft assembly
2	YCSP2625-02	15130	Needle bearing ball
3	YCSP2625-03	15131	Ring snap
4	YCSP2625-04	15132	Piston
5	YCSP2625-05	15133	Piston pin
6	YCSP2625-06	15134	Snap ring
7	YCSP2625-07	15135	Piston ring
8	YCSP2625-08	15136	Woodruff key 3 x 10

KEY No.	PART No.	STOCK No.	DESCRIPTION
9	YCSP2625-09	15137	Ball bearing 6001
10	YCSP2625-10	15138	Right oil ring 12 x 22 x 4.5
11	YCSP2625-11	15139	Left oil ring 12 x 22 x 6
12	YCSP2625-12	15140	Fly wheel
13	YCSP2625-13	15141	Screw m8 x 1
14	YCSP2625-14	15142	Cylinder
15	YCSP2625-15	15143	Support cylinder
16	YCSP2625-16	15144	Screw m5 x 20

Helpline: (023) 8049 4344. Sales Desk: (023) 8049 4333. General Enquiries: (023) 8026 6355.

DRAPER TOOLS LTD, HURSLEY ROAD, CHANDLER'S FORD, EASTLEIGH, HANTS. SO53 1YF. U.K website: www.drapertools.com e-mail: sales@drapertools.com