



THE TOOL COMPANY

100 WATT HEXAGONAL WALL LAMP

■ STOCK No.64282
64283

■ PART No.WL9B
WL9W

•INSTRUCTIONS•

IMPORTANT: PLEASE READ THESE INSTRUCTIONS
CAREFULLY TO ENSURE THE SAFE AND EFFECTIVE USE OF THIS LIGHT UNIT



03/2001



DECLARATION OF CONFORMITY

We

Draper Tools Ltd. Hursley Road, Chandler's Ford, Eastleigh, Hampshire. SO53 1YF. England.

Declare under our sole responsibility that the product:

Stock Nos:- 64282 & 64283 **Part Nos:-**WL9B & WL9W

Description:- Wall lamp

To which this declaration relates is in conformity with the following directive(s):- 73/23/EEC.

With reference to:- EN60588-2-7/A13 & EN60598-1/A12.

JOHN DRAPER
Managing Director

28/02/2001



GUARANTEE

Draper electric lights have been carefully tested and inspected before shipment and are guaranteed to be free from defective materials and workmanship for a period of 12 months from the date of purchase except where items are hired out when the guarantee period is ninety days from the date of purchase.

Should the light develop any fault, please return the complete item to your nearest authorized warranty repair agent or contact Draper Tools Limited, Chandler's Ford, Eastleigh, Hampshire. SO53 1YF. England.
Telephone: (023) 8049 4344.

If upon inspection it is found that the fault occurring is due to defective materials or workmanship, repairs will be carried out free of charge. This guarantee does not apply to normal wear and tear, nor does it cover any damage caused by misuse, careless or unsafe handling, alterations, accident, or repairs attempted or made by any personnel other than the authorized Draper warranty repair agent.

This guarantee applies in lieu of any other guarantee expressed or implied and variations of its terms are not authorized.

Your Draper guarantee is not effective unless you can produce upon request a dated receipt or invoice to verify your proof of purchase within the 12 month period.

Please note that this guarantee is an additional benefit and does not effect your statutory rights.

Bulbs are a consumable and are not covered by this guarantee.

DRAPER TOOLS LIMITED.



SPECIFICATION

Whilst every effort has been made to ensure that the information given in this manual is correct at the time of going to print, the Draper Tools policy of continuous improvement determines the right to change specification without notice.

Voltage. 230V A.C./50Hz
Maximum load rating 100W



INSTRUCTIONS

Please read and understand these instructions before installation, keep them for future reference. **IF IN DOUBT PLEASE CONSULT A QUALIFIED ELECTRICIAN.**
This product should not be tampered with or modified in any way; if this does occur the product may become unsafe and the warranty will be invalid. This product is suitable for outdoor use.



SAFETY

Please make sure that the mains electricity is isolated (switched off) before you start the installation or undertake any maintenance. It is recommended that the circuit fuse is removed to prevent the electricity being accidentally switched on. This product contains glass, please take care when handling or fitting.



FUSE VALUE

This light should be connected to a 5 Amp circuit. If the existing fuse in the circuit is higher than 5 Amps an inline fuse of 3 Amps should be fitted. This light should only be connected to a 220/240V 50Hz electricity supply in accordance with I.E.E. wiring safety regulations.

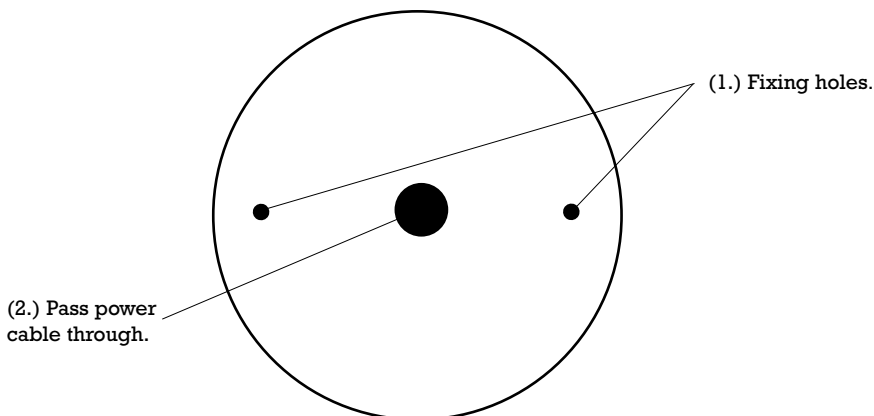


FIXING INSTRUCTIONS

1. Separate the backplate from the lamp by removing the two domed nuts on the front of the lamp. Leave the two threaded bolts in the backing plate.
2. Place backing plate against the wall and mark position of the fixing holes (Fig.1. - 1).

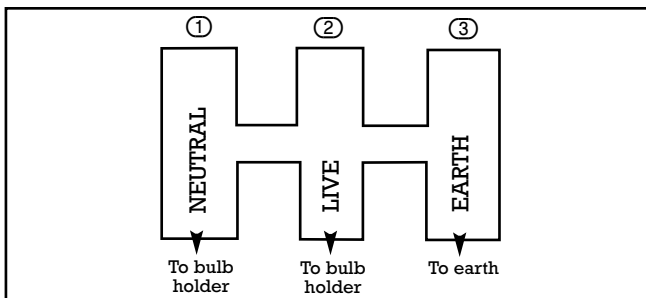
Fig.1.

INTERNAL VIEW OF BACK PLATE



FIXING INSTRUCTIONS CONT'

3. Drill the holes with a suitable drill bit and plug the mounting holes. Ensure there are no power cables and pipes below the surface before drilling.
4. Feed the mains cable through the grommet (Fig. 1. - 2). Now attach the backing plate to the wall with 2 screws supplied. Do not overtighten the screws as this could damage the light.
5. Connection to the mains power should be made using the general wiring code shown below. **THIS PRODUCT MUST BE EARTHED.**



- ① Terminal position for Neutral (from house mains) (Blue/Black).
- ② Terminal position for Live (Brown/Red).
- ③ Terminal position for Earth (Yellow & Green/Green).

N.B. Make sure that the incoming mains cable corresponds to the correctly coloured internal wire from the unit.

The incoming Brown/Red live wire must be opposite the Brown Live Wire from the unit. The Neutral Blue/Black wire must be opposite the Blue Neutral wire from the unit. The Green & Yellow earth wire must be opposite the Green & Yellow earth wire from the unit.

6. Tighten all terminal screws and make sure that there are no loose strands of cable showing.
7. Place rubber seal over backing plate then place the light onto backing plate, aligning the holes over the bolts on the backing plate. Replace the domed nuts and secure. **DO NOT OVERTIGHTEN.**
8. Insert 100W (max) bulb into screw fitting and then restore mains electricity.

IMPORTANT: - IF IN ANY DOUBT CONSULT A QUALIFIED ELECTRICIAN.



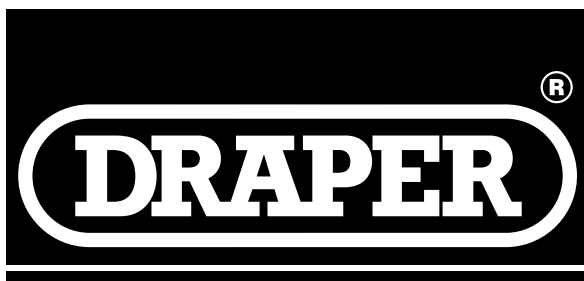
<h1>NOTES</h1>



NOTES



NOTES



THE TOOL COMPANY

DRAPER TOOLS LIMITED,

Hursley Road, Chandler's Ford, Eastleigh, Hants. SO53 1YF. U.K.

Helpline: (023) 8049 4344.

Sales Desk: (023) 8049 4333.

General Enquiries: (023) 8026 6355.

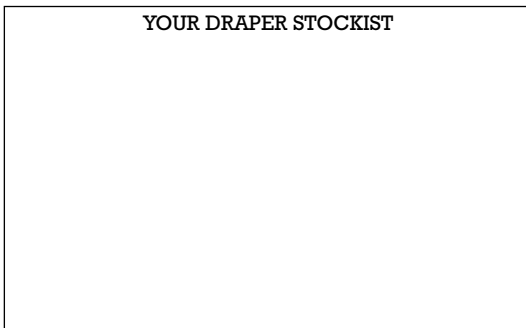
Fax: (023) 8026 0784.



www.draper.co.uk

e-mail: sales@draper.co.uk

YOUR DRAPER STOCKIST



©Published by Draper Tools Ltd.

No part of this publication may be reproduced, stored in a retrieval system or transmitted in any form or by any means, electronic, mechanical photocopying, recording or otherwise without prior permission in writing from Draper Tools Ltd.