

DRAPER[®]

SPARE PARTS LISTING SHEET FOR

**230V
Chainsaw**Stock No.81564
81565Part No.CS1800A
CS1600A

KEY No.	PART No.	STOCK No.	DESCRIPTION
1	Y-CS1600A-01	82208	Back cover Screw
2	Y-CS1600A-02	82210	Self tapping screw
3	Y-CS1600A-03	82211	Motor rear cover
4	Y-CS1600A-04	82212	Left housing
5	Y-CS1600A-05	82213	Power line
6	Y-CS1600A-06	82214	Self tapping screw
7	Y-CS1600A-07	82215	Self tapping screw
8	Y-CS1600A-08	82217	Cable clamp
9	Y-CS1600A-09	82219	Cable sleeve
10	Y-CS1600A-10	82220	Switch button
11	Y-CS1600A-11	82221	Lock off button
12	Y-CS1600A-12	82223	Anti lock button spring
13	Y-CS1600A-13	82225	Spring
14	Y-CS1600A-14	82226	The push rod assembly
15	Y-CS1600A-15	82230	Self tapping screw
16	Y-CS1600A-16	82231	Clamp
17	Y-CS1600A-17	82232	Self tapping screw
18	Y-CS1600A-18	82233	Front push rod assembly
19	Y-CS1600A-19	82236	Self tapping screw
20	Y-CS1600A-20	82237	Washer
21	Y-CS1600A-21	82238	Self tapping screw
22	Y-CS1600A-22	82239	Washer
23	Y-CS1600A-23	82240	Preventer plate
24	Y-CS1600A-24	82241	Rubber ring
25	Y-CS1600A-25	82242	Self tapping screw
26	Y-CS1600A-26	82243	Oil outlet joint seat
27	Y-CS1600A-27	82244	Self tapping screw
28	Y-CS1600A-28	82245	Delivery connection holder
29	Y-CS1600A-29	82246	Heat shrinkable tube
30	Y-CS1600A-30	82247	Female Terminal
31	Y-CS1600A-31	82248	Capacitance
32	Y-CS1600A-32	82249	Flange tapping screw
33	Y-CS1600A-33	82250	Clamp
34	Y-CS1600A-34	82251	Switch
35	Y-CS1600A-35	82252	Control switch

KEY No.	PART No.	STOCK No.	DESCRIPTION
36	Y-CS1600A-36	82253	Spring lamination
37	Y-CS1600A-37	82254	Connecting wire
38	Y-CS1600A-38	82255	Connecting wire
39	Y-CS1600A-39	82256	Connecting wire
40	Y-CS1600A-40	82257	Heat shrinkable tube
41	Y-CS1600A-41	82258	Transparent oil tube
42	Y-CS1600A-42	82259	Oil box assembly
43	Y-CS1600A-43	82260	Oil box cap assembly
44	Y-CS1600A-44	82261	Flat gasket
45	Y-CS1600A-45	82262	Brake lever spring
46	Y-CS1600A-46	82263	Brake bar
47	Y-CS1600A-47	82264	Brake bar dead plate
48	Y-CS1600A-48	82265	Countersunk head tapping screws
49	Y-CS1600A-49	82267	Brake bar clamp
50	Y-CS1600A-50	82268	Self tapping screw
51	Y-CS1600A-51	82269	Motor oil pump components
51-1-5	Y-CS1600A-5115	82274	Brush
51-2	Y-CS1600A-51-2	82294	Oil pump assembly
51-3	Y-CS1600A-51-3	82296	Flange tapping screw
52	Y-CS1600A-52	82297	Output shaft assembly
53	Y-CS1600A-53	82298	Dust shield
54	Y-CS1600A-54	82299	Self tapping screw
55	Y-CS1600A-55	82300	Self tapping screw
56	Y-CS1600A-56	82303	Clamp
57	Y-CS1600A-57	82304	The sponge The mat
58	Y-CS1600A-58	82305	Self tapping screw
59	Y-CS1600A-59	82306	Clamp
60	Y-CS1600A-60	82307	M8 stud
61	Y-CS1600A-61	82308	Right housing
62	Y-CS1600A-62	82309	Self tapping screw
63	Y-CS1600A-63	82310	Self tapping screw
64	Y-CS1600A-64	82311	Tensioning spring
65	Y-CS1600A-65	82312	Sprocket
66	Y-CS1600A-66	82313	Split washer
67	Y-CS1600A-67	82314	Adjust lever assy'

Helpline: (023) 8049 4344. Sales Desk: (023) 8049 4333. General Enquiries: (023) 8026 6355.

DRAPER TOOLS LTD, HURSLEY ROAD, CHANDLER'S FORD, EASTLEIGH, HANTS. SO53 1YF. U.K website: www.drapertools.com e-mail: sales@drapertools.com



SPARE PARTS LISTING SHEET FOR

230V Chainsaw

Stock No.81564
81565

Part No.CS1800A
CS1600A

KEY No.	PART No.	STOCK No.	DESCRIPTION
68	Y-CS1600A-68	82315	Heat insulation washer
69	Y-CS1600A-69	82317	Self tapping screw
70	Y-CS1600A-70	82318	Countersunk head tapping screws
71	Y-CS1600A-71	82319	Oil-out seal ring
72	Y-CS1600A-72	82321	End cap seal ring
73	Y-CS1600A-73	82322	End cover
74	Y-CS1600A-74	82323	Spindle cover

KEY No.	PART No.	STOCK No.	DESCRIPTION
75	Y-CS1600A-75	82325	Knob
76	Y-CS1600A-76	82327	Guide bar sleeve
77	AGP67	49107	Guide bar 400mm
77	AGP67	49108	Guide bar 450mm
78	AGP72	49112	Chain 400mm
78	AGP72	24946	Chain 450mm
79	Y-CS16000A-79	82629	Motor

Helpline: (023) 8049 4344. **Sales Desk:** (023) 8049 4333. **General Enquiries:** (023) 8026 6355.

DRAPER TOOLS LTD, HURSLEY ROAD, CHANDLER'S FORD, EASTLEIGH, HANTS. SO53 1YF. U.K website: www.drapertools.com e-mail: sales@drapertools.com

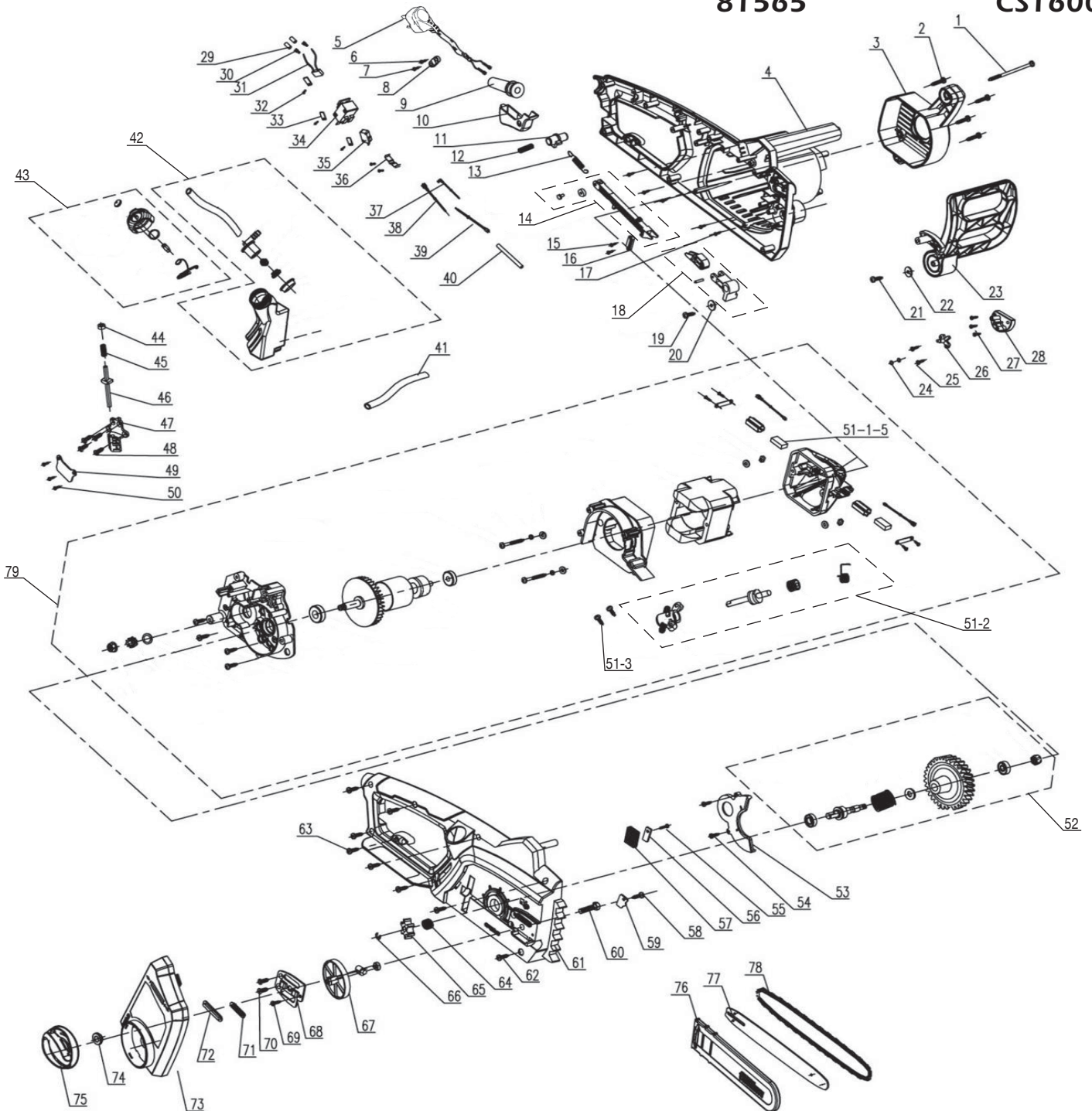


SPARE PARTS DRAWING SHEET FOR

230V Chainsaw

Stock No.81564
81565

Part No.CS1800A
CS1600A



Helpline: (023) 8049 4344. Sales Desk: (023) 8049 4333. General Enquiries: (023) 8026 6355.

DRAPER TOOLS LTD, HURSLEY ROAD, CHANDLER'S FORD, EASTLEIGH, HANTS. SO53 1YF. U.K website: www.drapertools.com e-mail: sales@drapertools.com

KCMC200515