

**DRAPER**<sup>®</sup>

INSTRUCTIONS FOR  
**Brush Cutter  
Attachment**

Stock No.14161

Part No.GTA1

**IMPORTANT:** PLEASE READ THESE INSTRUCTIONS CAREFULLY TO ENSURE THE SAFE AND EFFECTIVE USE OF THIS PRODUCT.



**DRAPER**<sup>®</sup>

**GENERAL INFORMATION**

These instructions accompanying the product are the original instructions. This document is part of the product, keep it for the life of the product passing it on to any subsequent holder of the product. Read all these instructions before assembling, operating or maintaining this product.

This manual has been compiled by Draper Tools describing the purpose for which the product has been designed, and contains all the necessary information to ensure its correct and safe use. By following all the general safety instructions contained in this manual, it will ensure both product and operator safety, together with longer life of the product itself. All photographs and drawings in this manual are supplied by Draper Tools to help illustrate the operation of the product. Whilst every effort has been made to ensure the accuracy of information contained in this manual, the Draper Tools policy of continuous improvement determines the right to make modifications without prior warning.



# CONTENTS

- 1. Guarantee ..... 1
- 2. Specification & scope ..... 2
- 3. Safety instructions ..... 3 - 4
- 4. Identification guide ..... 5
- 5. Assembly
  - Fitting the guard ..... 6
  - Fitting the blade ..... 6
  - Connecting the attachment ..... 6
- 6. Operation & Use
  - Working techniques ..... 7
  - Maintaining the blade ..... 7 - 8
- 7. Disposal ..... 9
- 8. Explanation of symbols/pictograms ..... 9
- Declaration of conformity ..... Enclosed



## 1. GUARANTEE

Draper tools have been carefully tested and inspected before shipment and are guaranteed to be free from defective materials and workmanship for a period of 12 months from the date of purchase except where tools are hired out when the guarantee period is ninety days from the date of purchase.

A proof of purchase must be provided with the tool.

Should the machine develop any fault, please return the complete tool to your nearest authorized warranty repair agent or contact Draper Tools Limited, Chandler's Ford, Eastleigh, Hampshire, SO53 1YF, England. Telephone Sales Desk: (023) 8049 4333 or Product Helpline (023) 8049 4344.

If upon inspection it is found that the fault occurring is due to defective materials or workmanship, repairs will be carried out free of charge.

This guarantee does not apply to normal wear and tear, nor does it cover any damage caused by misuse, careless or unsafe handling, alterations, accident, or repairs attempted or made by any personnel other than the authorised Draper warranty repair agent.

NOTE: If the tool is found not to be within the terms of warranty, repairs and carriage charges will be quoted and made accordingly. This guarantee applies in lieu of any other guarantee expressed or implied and variations of its terms are not authorised.

Your Draper guarantee is not effective unless you can produce upon request a dated receipt or invoice to verify your proof of purchase within the 12 month period. Please note that this guarantee is an additional benefit and does not affect your statutory rights.

Draper Tools Limited



## 2. SPECIFICATION

The Draper Tools policy of continuous improvement determines the right to change specification without notice.

Stock no. ....	14161
Part no. ....	GTA1
Cutting attachment:	
Type .....	Single Piece 8 Tooth Metal Blade
Blade diameter .....	255mm
Blade thickness .....	1.6mm
Blade bore diameter .....	25.4mm
Part no. ....	AGP75
Maximum rotational frequency of the spindle .....	7,400min <sup>-1</sup>
Mass (power unit & brush cutter attachment, without fuel, spool and guard) .....	5.9kg
Fuel tank volume .....	600cm <sup>3</sup>
Engine displacement .....	25.4cm <sup>3</sup>
Maximum engine performance <sup>1</sup> .....	0.75kW
Engine speed (rotational frequency) <sup>2</sup> .....	10,000min <sup>-1</sup>
Engine speed (rotational frequency) <sup>3</sup> .....	3,000min <sup>-1</sup>
Sound pressure level (A-weighted $L_{p_{A,av}}$ ) <sup>4</sup> .....	102dB(A)
Sound power level (A-weighted $L_{W_{A,av}}$ ) <sup>4</sup> .....	112dB(A)
Single value noise level <sup>5</sup> .....	112dB(A)
Vibration level <sup>6</sup> .....	10.5m/s <sup>2</sup>

### ALWAYS WEAR SUITABLE AND APPROVED PERSONAL PROTECTIVE EQUIPMENT.

<sup>1</sup> In accordance to ISO 8893.

<sup>2</sup> At recommended maximum spindle rotational frequency.

<sup>3</sup> At idling.

<sup>4</sup> In accordance to BS EN ISO 22868.

<sup>5</sup> A-weighted sound pressure level in accordance to 2000/14/EC

<sup>6</sup> In accordance to BS EN ISO 22867.

The declared vibration total value has been measured in accordance with a standard test method and may be used for comparing one tool with another.

The declared vibration total value may also be used in a preliminary assessment of exposure.

**WARNING!** The vibration emission during actual use of the power tool can differ from the declared total value depending on the ways in which the tool is used.

**WARNING!** Identify safety measures to protect the operator that are based on an estimation of exposure in the actual conditions of use (taking account of all parts of the operating cycle such as the times when the tool is switched off and when it is running idle in addition to the trigger time).

**SCOPE:** This brush cutter attachment is designed exclusively for connection to the Draper 26cc petrol engine [Stock no.14153 or 14160]. When joined it forms a single piece metal blade brush cutter intended for clearing weeds, dense brush and small trees<sup>7</sup> in a domestic environment.

**⚠ ATTENTION!** Any other application is considered misuse.

<sup>7</sup>young saplings with a perennial stem less than 2cm diameter.

### 3. SAFETY INSTRUCTIONS

**WARNING!** For your safety, please read and understand these instructions before assembling, operating or maintaining this machine.

**WARNING!** Read the instructions carefully.

Never attempt to modify or operate a modified machine. Fully assemble this machine, including all relevant guards, before operating. Do not operate the machine without being completely familiar with the safety features and how to operate them.

Never operate this machine if the stop switch is faulty not functioning.

Never operate this machine while tired, ill or under the influence of drugs.

**DANGER!** Keep out of the reach of children.

Refer to the instructions supplied with the engine. Fully read and understand before attempting to assemble, operate [especially fuelling] or maintain the engine.

Never allow people unfamiliar with these instructions to operate this machine. Local regulations may restrict the age of the operator.

Prior to each use, inspect the machine for signs of damage. Make sure the safety features are present and functioning and that all visible nuts, bolts and screws remain tight. Vibration from normal use can cause them to loosen over time.

**Never operate this machine with defective or missing guards.**



**WARNING!** Use of this product can pose a danger to wildlife. Before attempting to use this machine, check the area, particularly long grass and under bushes for signs of life: if necessary relocate. **NOTE:** Not all animals will be deterred by the noise of the product alone.

Do not operate this machine near animals or bystanders. Maintain a distance of at least 15M between the operating machine and bystanders.

Check this attachment is correctly fitted to the P.T.O. shaft before attempting to start the engine.

**CAUTION!** As the user you are responsible for any injury to people or damage to property.

Never leave this machine running when not in use or leave the it unattended during use.

Always be aware of your surroundings, staying alert for possible hazards that you may not hear over the noise of the engine.

Always wear appropriate PPE [Personal Protective Equipment].

- Wear head protection if there is a risk of falling objects.
- Wear eye protection [safety goggles or face shield] to protect your eyes from debris thrown up .
- Ear defenders must be worn to prevent damage to your hearing.
- Wear suitable footwear to prevent slipping and protect your feet from injury.
- Gloves to help reduce vibration fatigue.

Wear fitted clothing and remove items likely to become drawn in, for example, ties, scarfs, and jewelry. Also, if applicable, tie back long hair.

For outdoor use only.

Always maintain a safe and secure position on level ground while operating this product.

Beware of the conditions under foot. If work on a slope is unavoidable, always be sure of your footing.

Keep all handles and switches free from oil, fuel and moisture.

Always operate the machine with two hands.

Operate the machine using the harness supplied. Make sure it is suitably adjusted to the correct size. This will help prevent fatigue.

Make sure the blade does not rotate while the machine is at idle.

Do not inhale exhaust fumes as they are toxic.

Do not set this machine down on or near easily combustible material for example dry leaves or grass.

Do not use metal blades other than those specified.

Beware of thrown object and debris. There is a risk of injury and damage to personal property.

If the machine starts to vibrate abnormally or starts making unusual noises stop the engine immediately. Investigate the problem or return the machine to an authorized service agent.

**WARNING!** The cutting head continues to rotate after the trigger has been released.

## 3. SAFETY INSTRUCTIONS

### MAINTENANCE

Always maintain this machine in good working order and regularly serviced by an authorized service agent.

Only use genuine replacement parts supplied by the manufacturer.

### STORAGE

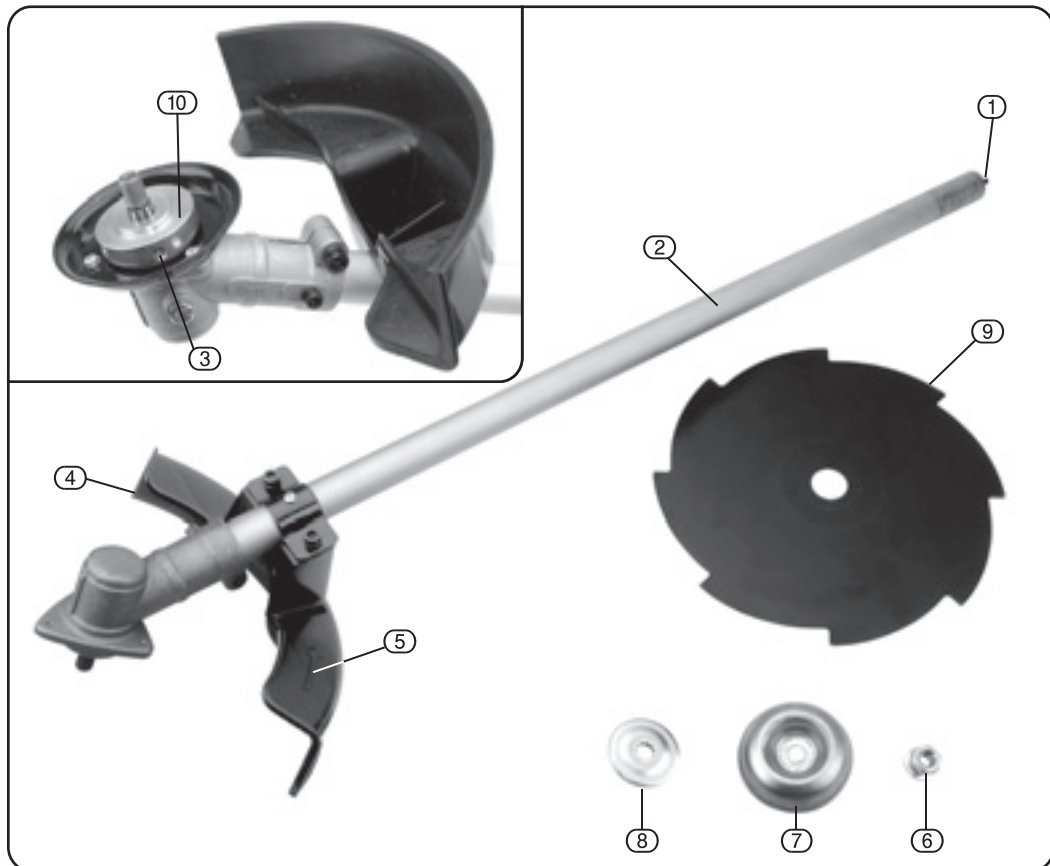
After each use, clean the machine thoroughly. Remove the spark plug ignition lead from the back of the spark plug to disable the engine from starting.

Store the machine out the reach of children and in a locked, dry location.

**Remove all residual fuel from the fuel tank before storing.** Fuel quality deteriorates over a couple of months causing starting/running problems.

Store the machine in a horizontal position. Do not stand upright with the engine on the floor.

## 4. IDENTIFICATION GUIDE



### Brush cutter attachment:

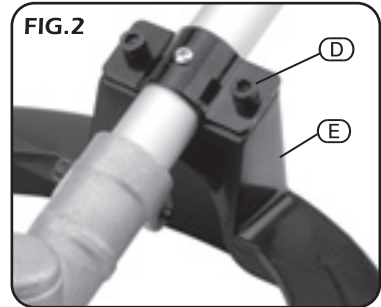
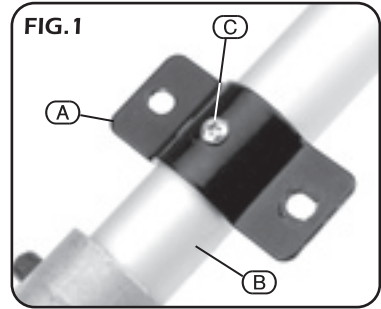
- |   |                               |   |                               |
|---|-------------------------------|---|-------------------------------|
| ① | P.T.O. connection point.      | ⑥ | Blade nut [left hand thread]. |
| ② | Shaft.                        | ⑦ | Cover.                        |
| ③ | Spindle lock.                 | ⑧ | Outer flange.                 |
| ④ | Guard.                        | ⑨ | Blade 255x1.6mm.              |
| ⑤ | Direction of rotation symbol. | ⑩ | Inner flange.                 |

- **UNPACKING:** After removing the packing material, make sure the product is in perfect condition and that there are no visible damaged parts. If in doubt, do not use the product and contact the dealer from whom it was purchased.
- The packaging materials (plastic bags, polystyrene, etc.), must be disposed of in an appropriate refuse collection container. These materials must not be left within the reach of children as they are potential sources of danger.

### 5.1 FITTING THE GUARD (Fig.1 & 2):

**WARNING!** All guards must be fitted and fully operational before using this machine.

- i. Screw the bracket (A) to the output shaft (B) with the self tapping cross slot screw (C) in to the pre drilled hole.
  - ① Refer to 4. Identification Guide for the exact positioning.
- ii. Drop the spring washer over the end of the 5mm hex. socket bolt (D).
- iii. Pass the bolt down through bracket (A) and in to guard (E), turning it clockwise to engage with the nut.
- iv. When the attachment is fitted, the guard should be positioned directly between the blade and your legs. Using a 5mm hex. key tighten the bolts so that the guard does not move freely.



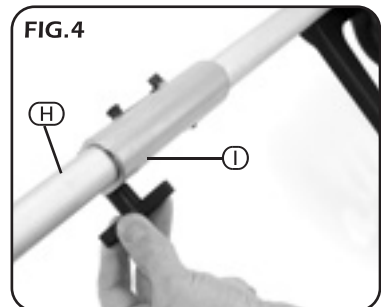
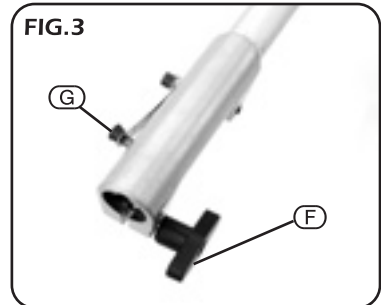
### 5.2 FITTING THE BLADE

Refer to section 6.2.2 **Fitting the blade** for detailed information.

### 5.3 CONNECTING THE ATTACHMENT (Fig.3 & 4):

- ① **Before** attempting to start the engine, this attachment must be correctly assembled to the engine output shaft's, power take off.
  - i. Make sure the locking handle (F) is loose by turning it anticlockwise a few turns.
  - ii. Pull back on the positioning pin (G) and move it to one side, clear of the hole.
  - iii. Slide the brush cutter's shaft (H) inside the power take off collar (I) of the engine unit.
  - iv. Line up the holes in both shafts before locating pin (G).
  - v. Tighten the locking handle (F) clockwise to secure the two sections together.

**Do not attempt to connect non-genuine accessories as it may result in injury or cause damage to this machine**



## 6. OPERATION & USE

### 6.1 WORKING TECHNIQUES (Fig.5):



**WARNING!** Use of this product can pose a danger to wildlife. Before attempting to use this machine, check the area, particularly long grass and under bushes for signs of life: if necessary relocate.

**NOTE:** Not all animals will be deterred by the noise of the product alone.

The metal blade is intended for clearing weeds dense brush and small trees [see scope for more detail]. The metal blade is a consumable item; avoiding contact with larger trees, roots, stones, walls, fences and other hard surfaces will help prolong the life of it.

Begin cutting at full throttle, hovering the blade assembly just off the ground while making arc shaped sweeping actions through the vegetation. The blade must be kept level with the ground to avoid scalping the surface. The most effective area of the cutting head is shown in Fig. 5.

When cutting woody scrub, use the left hand side of the blade. This is safer and less likely to cause blade thrust [a type of kickback].

### 6.2 MAINTAINING THE BLADE (Fig.6 - 9):

As with all other cutting means, the blade will need regular maintenance, whether for sharpening or replacing.

#### 6.2.1 Removing the blade:

- i. With the engine stopped, locate the spindle locking point (J).
- ii. Using a suitable tool [for example a 3mm hex. key] lock the spindle to stop it from turning. It may be necessary to turn the cutting head before the hex. key fully engages all the way.

FIG.5

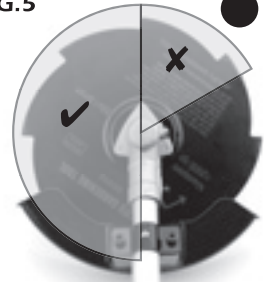


FIG.6





## 6. OPERATION & USE

- iii. With the spindle held fast, use the combination tool to remove the 17mm blade nut (L). Turn the nut clockwise to loosen it.
- iv. Remove the blade nut (L), cover (M), outer flange (N), and blade (O).

### 6.2.2 Fitting the blade:

- i. With the engine stopped, locate the spindle locking point (J) [Fig.6].
- ii. Using a suitable tool [for example a 3mm hex. key], lock the spindle to stop it from turning. It may be necessary to turn the spool assembly before the hex. key fully engages all the way.

ⓘ **Before fitting, match the direction of rotation arrow on the blade with the one on the guard.**

- iii. Sit the blade on to the spindle making sure the inner flange (P) is the right way round [see Fig.8].
- iv. Replace the outer flange (N) and cover (M).
- v. Start the blade nut (L) anticlockwise before tightening it.
- vi. Removing the hex. key from the spindle lock.

FIG.7

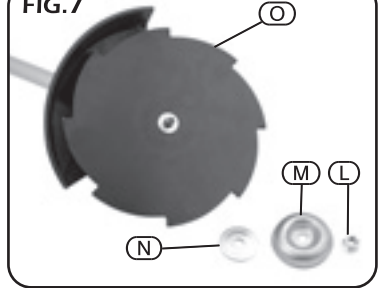
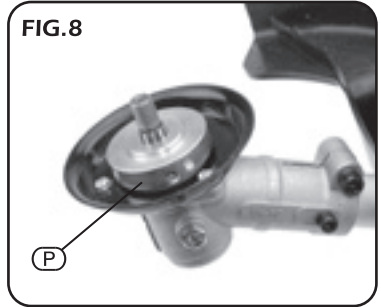


FIG.8



## 7. DISPOSAL

- At the end of the product's working life, or when it can no longer be repaired, ensure that it is disposed of according to national regulations.

In all circumstances:

- Do not dispose with domestic waste.
- Do not incinerate.
- Do not abandon in the environment.
- When decommissioning [preparing the machine to be scrapped] drain any remaining fuel and oil for separate disposal.

## 8. EXPLANATION OF SYMBOLS/PICTOGRAMS



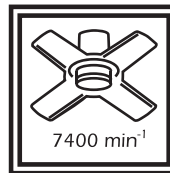
Beware of thrown objects.



WARNING.  
Can pose a danger  
to wildlife.



The distance between the  
machine and bystanders  
shall be at least 15M.



Blade must be rated to  
7,400 min<sup>-1</sup> or greater.



# NOTES

- **DRAPER TOOLS LIMITED,**  
Hursley Road, Chandler's Ford,  
Eastleigh, Hampshire. SO53 1YF. U.K.
- **Helpline:** (023) 8049 4344
- **Sales Desk:** (023) 8049 4333
- **Internet:** [www.draper.co.uk](http://www.draper.co.uk)
- **E-mail:** [sales@drapertools.com](mailto:sales@drapertools.com)
- **Sales Fax:** (023) 8049 4209
- **General Enquiries:** (023) 8026 6355
- **Service/Warranty Repair Agent**  
For aftersales servicing or warranty repairs, please contact the Draper Tools Helpline for details of an agent in your local area.

YOUR DRAPER STOCKIST

©AMC200110