



## SPARE PARTS LISTING SHEET FOR 1050W 230V Hammer Drill

Stock No.83586 Part No.HD1150VKA

KEY No.	PART No.	STOCK No.	DESCRIPTION
1	Y-HD1150VKA-01	17829	Screw (lh)
2	Y-HD1150VKA-02	17830	Chuck
3	Y-HD1150VKA-03	17831	Circlip
4	Y-HD1150VKA-04	17832	Bolt
5	Y-HD1150VKA-05	17834	Washer
6	Y-HD1150VKA-06	17835	Handle hoop
7	Y-HD1150VKA-07	17836	Depth stop
8	Y-HD1150VKA-08	17838	Auxiliary handle
9	Y-HD1150VKA-09	17839	Support
10	Y-HD1150VKA-10	17840	Handle cover
11	Y-HD1150VKA-11	17842	Cover
12	Y-HD1150VKA-12	17843	Knob
13	Y-HD1150VKA-13	17844	O ring
14	Y-HD1150VKA-14	17845	Spring b
15	Y-HD1150VKA-15	17846	Cap
16	Y-HD1150VKA-16	17847	E ring
17	Y-HD1150VKA-17	17848	Tapping screw
18	Y-HD1150VKA-18	17849	Plain washer
19	Y-HD1150VKA-19	17850	Push plate
20	Y-HD1150VKA-20	17851	Spindle lock sleeve
21	Y-HD1150VKA-21	17852	Paralel pin
22	Y-HD1150VKA-22	17853	Gear
23	Y-HD1150VKA-23	17854	Clutch assembly
24	Y-HD1150VKA-24	17855	Paralel pin
25	Y-HD1150VKA-25	17856	Gear
26	Y-HD1150VKA-26	17857	Washer
27	Y-HD1150VKA-27	17858	Bearing support assembly
28	Y-HD1150VKA-28	17860	Gasket seal
29	Y-HD1150VKA-29	17861	Rubber ring
30	Y-HD1150VKA-30	17862	Washer
31	Y-HD1150VKA-31	17863	Fan baffle
32	Y-HD1150VKA-32	17864	Rotor assembly
33	Y-HD1150VKA-33	17865	Epoxy board
34	Y-HD1150VKA-34	17866	Brush holder
35	Y-HD1150VKA-35	17867	Carbon brush assembly

KEY No.	PART No.	STOCK No.	DESCRIPTION
36	Y-HD1150VKA-36	17868	Tapping screw
37	Y-HD1150VKA-37	17869	Internal wire assembly
38	Y-HD1150VKA-38	17870	Stator
39	Y-HD1150VKA-39	17871	Internal wire assembly
40	Y-HD1150VKA-40	17872	Internal wire assembly
41	Y-HD1150VKA-41	17873	Motor housing
42	Y-HD1150VKA-42	17874	Forward / reverse button
43	Y-HD1150VKA-43	17875	Left decorative cover
44	Y-HD1150VKA-44	17876	Left handle
45	Y-HD1150VKA-45	17877	Power cord & plug
46	Y-HD1150VKA-46	17878	Cord guard
47	Y-HD1150VKA-47	17879	Cord anchorage
48	Y-HD1150VKA-48	17880	Tapping screw
49	Y-HD1150VKA-49	17881	Capacitor
50	Y-HD1150VKA-50	17882	Connector
51	Y-HD1150VKA-51	17883	Internal wire assembly
52	Y-HD1150VKA-52	17884	Shrinkable tube
53	Y-HD1150VKA-53	17885	Tapping screw
54	Y-HD1150VKA-54	17886	Right decorative cover
55	Y-HD1150VKA-55	17887	Right handle
56	Y-HD1150VKA-56	17888	Switch
57	Y-HD1150VKA-57	17889	Internal wire assembly
58	Y-HD1150VKA-58	17890	Shrinkable tube
59	Y-HD1150VKA-59	17891	Pcb assembly
60	Y-HD1150VKA-60	17892	Bearing holder
61	Y-HD1150VKA-61	17893	Internal wire assembly
62	Y-HD1150VKA-62	17894	Cover
63	Y-HD1150VKA-63	17895	Knob
64	Y-HD1150VKA-64	17896	Plate
65	Y-HD1150VKA-65	17897	Washer
66	Y-HD1150VKA-66	17899	Gear shaft assembly
67	Y-HD1150VKA-67	17900	Washer
68	Y-HD1150VKA-68	17901	Gear case assembly
69	Y-HD1150VKA-69	17902	Tapping screw
70	Y-HD1150VKA-70	17903	Spindle assembly

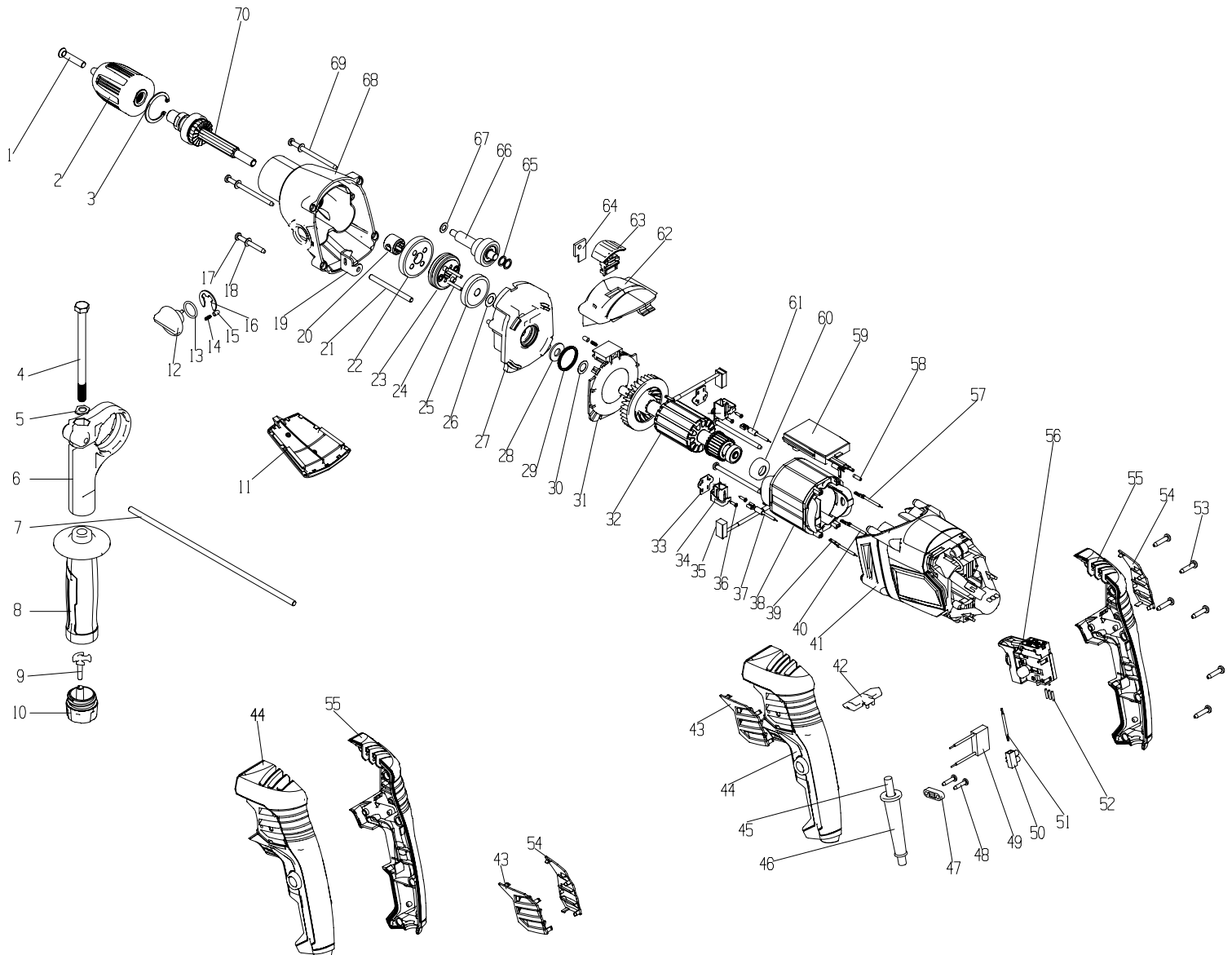
**Helpline: (023) 8049 4344. Sales Desk: (023) 8049 4333. General Enquiries: (023) 8026 6355.**

DRAPER TOOLS LTD, HURSLEY ROAD, CHANDLER'S FORD, EASTLEIGH, HANTS. SO53 1YF. U.K website: drapertools.com e-mail: sales@drapertools.com



SPARE PARTS DRAWING SHEET FOR  
**1050W 230V  
Hammer Drill**

Stock No.83586 Part No.HD1150VKA



**Helpline: (023) 8049 4344. Sales Desk: (023) 8049 4333. General Enquiries: (023) 8026 6355.**

DRAPER TOOLS LTD, HURSLEY ROAD, CHANDLER'S FORD, EASTLEIGH, HANTS. SO53 1YF. U.K website: drapertools.com e-mail: sales@drapertools.com

RDMC0616